

#300 PEERLESS

Probably the most common Heisey toothpick holder is the #300 Peerless. It was made only in crystal from 1899 to 1913 and is usually marked inside the bowl on the bottom. But since Peerless was produced prior to the introduction of the "Diamond H" trademark in 1901, perhaps 10% of all pieces are found unmarked, like the rest of the earliest Heisey patterns. There were two different factory decorations: one with plain gold trim, the other with a broad gold and engraved band around the center. Ruby stain is a possible decoration, but remains unreported so far. Distinguishing features include the rim which has 6 scallops with serrations and a ring of pleats or incised cuts on the body just above the base. The Peerless 2½ oz. bar tumbler appears very similar except for a flat rim to facilitate pouring.

#331 COLONIAL PANEL OR #400 COLONIAL SCALLOPED TOP

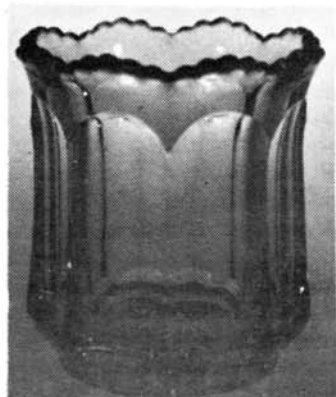
An analysis and evaluation of currently available research material indicates that the #331 Colonial Panel and #400 Colonial Scalloped Top toothpick holders are identical. However, Catalog #75 (which is widely available as a reprint) contains an apparent error among three toothpick holders. During the original catalog layout, the drawing for #300 Peerless (page 153) was also used for the very similar #331 Colonial Panel (page 159) instead of the correct drawing from #400 Colonial Scalloped Top (page 233). The earlier Catalog #56 shows them correctly. The key to distinguishing them is very simple. The #300 Peerless has SIX scallops with serrations along the rim and is hexagonal in shape with a body composed of SIX flutes. The #331 and #400 colonial pieces have EIGHT scallops with serrations along the rim and are octagonal in shape with bodies composed of EIGHT flutes.

The #331/#400 colonial toothpick holders were made only in crystal from 1908 to 1913 and are always marked inside the bowl on the base. Firepolishing and wearing of the molds may make the mark very faint, but almost always some indication of the "Diamond H" remains. There are no documented factory decorations and no other decorations have been reported. This always plain appearance in crystal often results in the rash misidentification (and pricing!) as a #300 Peerless, when the #331/#400 colonial toothpick holders are really much more elusive. Remember to watch the rim - SIX scallops means the common #300 Peerless and EIGHT scallops means the uncommon #331 Colonial Panel or #400 Colonial Scalloped Top.



TOOTHPICK

#300 PEERLESS



#331 COLONIAL PANEL



*

CONVENTION NOTES

*

The Sheraton Inn is full. Check your Auction list for the motel list.

We still need volunteers for the Convention. No club has yet offered to be in charge of the Swap Shop. If anyone volunteers we are sure last year's committee will advise you. It is a fairly simple job since the hotel sets up the room for it.

Also only one club has offered to bake cookies this year for the lounge at the Museum. We need either another club or two or several individuals. This has become a very nice part of the Convention so we want it to be a success in our anniversary year. The lounge will be moved back to the lower level of the Museum since the annex is full of offices and library now.

*

*

*

Heisey Toothpicks

No.	Pattern	Year	Marked	C	O	Cs	G	Cy
150	Banded Flute	1907	Usually	X				
160	Locket on Chain	1900	No	X			X	X
300	Peerless	1900	Usually	X				
305	Punty & Diamond Point	1900	Sometimes	X				
310	Ring Band	1900	Sometimes			X		
315	Paneled Cane	1901	Yes	X				
325	Pillows	1901	Yes	X				
331	Colonial Panel	1907	Yes	X				
333	Waldorf Astoria	1901	Yes	X				
335	Prince of Wales Plume	1902	Yes	X				
337	Touraine	1902	Yes	X				
339	Continental	1903	Yes	X				
341	Puritan	1904	Usually	X				
343	Sunburst	1904	Yes	X				
351	Priscilla	1907	Yes	X				
352	Flat Panel	1908	Usually	X				
353	Medium Flat Panel	1909	Yes	X				
357	Prison Stripe	1906	Yes	X				
365	Queen Anne	1907	Yes	X				
379	Urn	1907	Yes	X				
400	Colonial Scalloped Top	1909	Yes	X				
433	Grecian Border	1912	Yes	X				
1200	Cut Block	1896	No	X				
1201	Fandango	1896	No	X				
1205	Fancy Loop	1896	Rarely	X			X	
1220	Punty Band	1897	Sometimes	X		X		
1225	Plain Band	1897	Sometimes	X				
1235	Beaded Panel & Sunburst	1897	Sometimes	X				
1255	Pineapple & Fan	1898	No	X			X	
1280	Winged Scroll	1899	No	X		X	X	X
1295	Bead Swag	1898	Sometimes	X	X		X	
1776	Kalonyal	1906	Yes	X				

C=Crystal; O=Opal; Cs=Custard; G=Green; Cy=Canary