

#1225



#325



#335



#1235



#1255



#160



#357



#433

SALT AND PEPPER SHAKERS OF HEISEY'S MAJOR PATTERNS

By Christos Maskaleris

From the beginning of glass making, Heisey made Salt and pepper shakers. Salt and pepper shakers were made in many shapes, sizes and colors, trimmed with many decorations, etchings and cuttings.

There were 52 major Heisey patterns which included salt and pepper shakers. Not included in this number are patterns with fractional numbers: 300 1/2, 1205 1/2, 1469 1/2 and 1503 1/2. Many of the patterns had shakers made in more than one size or shape. The earlier patterns were usually the ones with more than one kind of shaker. Peerless #300 and Plain Band #1225 each had four different kinds of shakers. In addition, Peerless #300 1/2 had an additional three different kinds of shakers of its own, making a total of seven different shaker types produced in the Peerless pattern. Medium Flat Panel #353 had a shaker called a "Combination Salt and Pepper Shaker". The name would imply that both salt and pepper could pour out together from one top. Since I have never seen one or found any other information outside of the catalog picture I cannot provide any details on how it worked.

All shakers were produced in Crystal, and most of the early patterns were also produced in Custard, Opal and Emerald, and Locket on Chain #160 was also made in Vaseline. On order, shakers were provided with applied gold, red, green, floral and other colored trim and decorations. Cuttings and etchings were also available on shakers. Again starting in the twenties and continuing until Heisey closed many shakers were made in color. Empress #1401 shakers were produced in the most colors: Flamingo, Moongleam, Marigold, Sahara, Alexandrite, Cobalt and Tangerine.

Crystolite #1503 1/2 and Ridgeleigh #1469 1/2 can be found in a yellow color similar to Sahara and were made by the Bryce Glass Company and marked with a "B" in a Diamond. The Heisey Company loaned the molds to Bryce to produce the shakers in the Bryce yellow color.
Replace Bryce with Boyd, Sahara with Amber

Orders were taken for: (1) shaker bodies only, (2) shakers with tops, and (3) tops only. Shakers were available with many types of tops. Heisey offered the following tops during its lifetime: Four types of Sanitary tops, Glass tops, Plastic tops, Chrome plated tops, Silver plated tops, Nickel silver plated tops, Sterling plated tops, Spun nickel tops, White metal heavy silver plated tops, and Salt Proof tops non-corrosive metal.

(Contd pg 3)

SALT & PEPPER SHAKERS (Contd fr pg 2)

Heisey produced shakers in fifty-two major Heisey patterns. They came in ninety-eight different shapes and sizes, and in at least fifteen different colors and with numerous decorations, cuttings and etchings. Heisey also supplied shaker blanks to many outside glass and decorating companies who cut, etched and decorated them with their designs for further utilization and sale.



#365



#343



#1201

Heisey Salt and Peppers by John Martinez

While researching Heisey Salt and Peppers for our club's program, I came across a lot more than I bargained for. Besides Mr. Chris's article above, back issues of the Heisey News are loaded with little snippets about salt and peppers. In the 1980's, Louise Ream had a running article called "Heisey's Little Things" where she introduced collectors to all things small and Heisey. Neila Bredehoft narrowed in on the subject with her articles on "Salts and Peppers." Both authors were prolific and informative in their writings.

In preparing my handout for the program, I went through all of my reference materials and made a list of the available salt and peppers in each pattern. In the book "Heisey Glass 1896-1957," by Neila and Tom Bredehoft, they have a price for the #417 Double Rib and Panel salt and pepper, but no picture. The #417 salt and pepper were first mentioned in Joe Lokay's article titled "More on #417 Double Rib and Panel" in the December 1979 Heisey News. Looking back through all back issues of the Heisey News and all of my other reference materials, I can find no picture of this salt bottle.

I also contacted Walter Ludwig with questions concerning a couple of salts, and he put me in contact with Eric Tankesley-Clarke. Eric was kind enough to look over what I had created and sent me back some notes on research he had on the subject. The following is Eric's feedback to me:

There was a #7 salt. It is listed in at least one of the old price lists (PL 60) and mentioned in Neila's article in June, 1983, p. 11. No name given, no illustration. I suspect no one knows what it looked like.

The Bredehoft color-era book (p. 365) mentions a salt "very similar" to #42 Elegance, taller and marked on the side. I have found nothing further on this. I assigned it HCA #8105.

The mould list includes a #20 shaker, appearance unknown to me.

The mould list includes a #56 shaker, appearance unknown.

There may be a #338 No. 2 salt. Apparently it was in a 1912 turn book or ledger (May, 1980, p. 16). No illustration. There was some deal made of it, so I don't think there's a typo in the Heisey News, but I wonder if something was misread or mis-recorded in the old ledger.

The mould list shows a #399 shaker, but I think this is an entry error, since 399 was the code used for shakers in general.

Mould list shows a #548 shaker. I have no idea what this would be.

An intriguing entry in the mould list. There is a #1183 shaker, with a comment that it is same as #96 salt shaker. This appears to refer to the shaker offered by Imperial in the Revere line, so the mould might not have even originated with Heisey. Or could Heisey have added a salt to the Revere line in the 1950's? (Imperial seems to have used 96 to designate salts in whatever line they appeared. That's what they did with the #341 shakers, too.) There is a separate entry in the mould list for another #1183 shaker, which apparently refers to the sugar shaker.



Mould list shows a #1305 shaker; note says appears to be a blown mould. A separate note from a different source says there was a group (#1300-1306) of items made for Union Pacific. If I recall correctly that's from a hand-written addition to a price list, maybe PL 211 but I haven't gone back to verify that.

Cat. 30 lists a #1605 salt. No illustration. It took a #57 chrome top.

Mould list also includes a #1805 shaker. With this strange number, I wonder if that could be a mis-reading of #1305, itself strange excepting that we know of the U.P. items. Or even a mis-reading of #1605.

The list of moulds shows a #6001 salt. (There was a cruet to go with it.)

Vogel shows a shaker in his Summer 1980 issue, p. 13, which he says is unmarked but one he considered Heisey, #7113. Frankly, I'd be dubious of this one. (Unless maybe it's #1605 or #6001!) I agree with Eric on this one. The shaker Mr. Vogel shows is colonial in style so I doubt seriously it would be #1605, and #6001 would have been one of Eva Zeisel's designs.

Wow, that sure is a lot of shakers nobody has seen! Thanks Eric. There may be even more, things still turn up to this day so keep your eyes open for the Heisey mark!

In the February, 1981 Heisey News, P.15, Neila Bredehoft (I told you she was a prolific writer) tells about finding a salt and pepper that were the same shape and size as the 1483 Stanhope, without the ribs. Her original guess was that she had found the 1951 Cabochon salt. Her guess was confirmed when she found another set with the #1015 Dolly Madison Rose cutting.

Now, about tops. I have included many of the Heisey tops in the following pages, but not all. Heisey sold many of their salt and peppers without tops so other decorating companies could add their own. Heisey tops are nice to have, but if you find tops you like and they fit, I say go for it. Sterling Silver tops are always nice to find!



No. 1 SANTARY
SILVER PLATED TOP



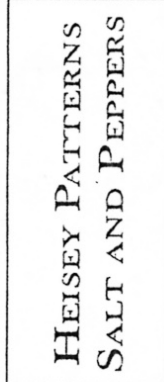
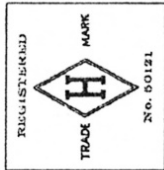
No. 3 SANTARY
NICKEL PLATED TOP



No. 2 SANTARY
GLASS TOP



No. 4 SANTARY
GLASS TOP



HEISEY PATTERNS SALT AND PEPPERS



No. 561 TOP
NICKEL TOP



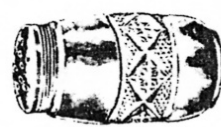
No. 60 TOP
SILVER PLATED



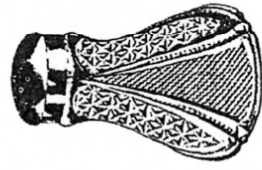
No. 61 TOP
SILVER PLATED



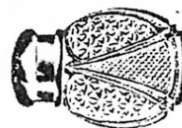
No. 62 TOP
SILVER PLATED



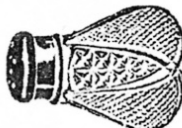
No. 1200
CUT BLOCK



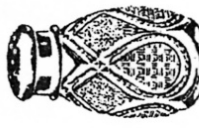
No. 1201-3



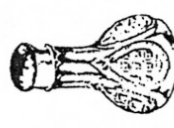
No. 1201-2
PANDANGO



No. 1201-1



No. 1205-1



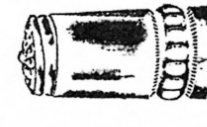
No. 1205 1/2
FANCY LOOP



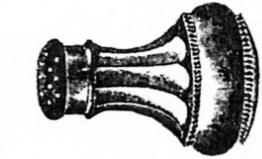
No. 1205-3



No. 1220-1
PUNTY BAND



No. 1220-3



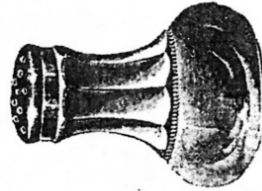
No. 1225-1



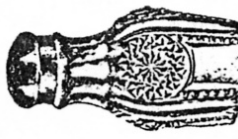
No. 1225-2



No. 1225-3



No. 1225-4



No. 1235-1



No. 1235-2



No. 1235-3



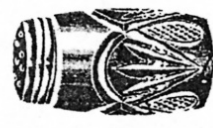
No. 1250
GROOVE AND SLASH



No. 1255-1



No. 1255-2



No. 1255-3



No. 160
LOCKET ON CHAIN



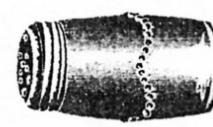
No. 1280-2



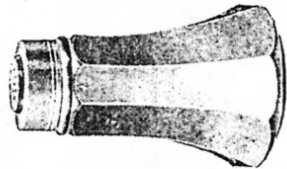
No. 1280-3



No. 1295-1



No. 1295-2



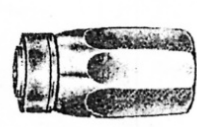
No. 300-4
PEERLESS



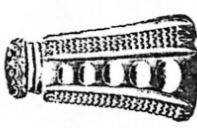
No. 300-3



No. 300 1/2
No. 2



No. 300 1/2
No. 3



No. 305-2



No. 305-3



No. 310
RING BAND



No. 315
PANELED CANE



No. 1 SANITARY
SILVER PLATED TOP
GLASS TOP



No. 3 SANITARY
NICKEL PLATED TOP
GLASS TOP



No. 2 SANITARY
PLASTIC TOP



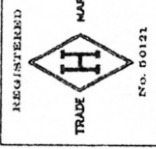
No. 4 SANITARY
GLASS TOP



No. 6 SANITARY
GLASS TOP



No. 20 SANITARY
PLASTIC TOP



HEISEY PATTERNS SALT AND PEPPERS



No. 13 TOP
SILVER PLATED



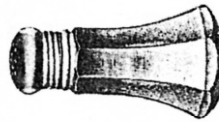
No. 37 TOP
SILVER PLATED



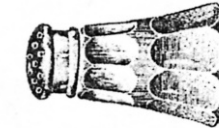
No. 40 TOP
SILVER PLATED



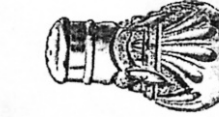
No. 325-2 No. 325-3
PILLOWS



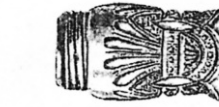
No. 331
COLONIAL PANEL



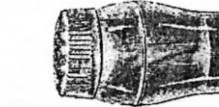
No. 333
WALDORF ASTORIA



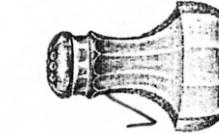
No. 335-2 No. 335-3
PRINCE OF WALES PLUMES



No. 337
TOURNAINE



No. 339-2 No. 339-3
CONTINENTAL



No. 439
BANDIED FLUTE



No. 341-2 No. 341-3
PURITAN



No. 343-2 No. 343-3
SUNBURST



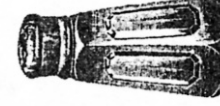
No. 351
PRISCILLA



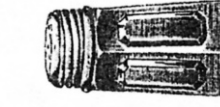
No. 357-2 No. 357-3
PRISON STRIPE



No. 357-2 No. 357-3
PRISON STRIPE



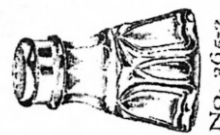
No. 1776-2 No. 1776-3
KALONYAL



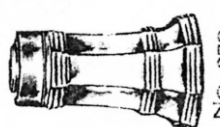
No. 1776-2 No. 1776-3
KALONYAL



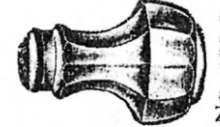
No. 1776-2 No. 1776-3
KALONYAL



No. 365-2 No. 365-3
QUEEN ANNE



No. 379
URN



No. 400-2 No. 100-3
COLONIAL SCALLOPED TOP



No. 393
NARROW FLUTE



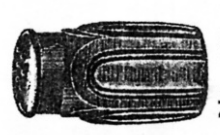
No. 397
COLONIAL
CUPPED SCALLOP



No. 429
PLAIN PANEL
RECTESS



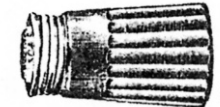
No. 433
GREEK KEY



No. 439
RAISED LOOP



No. 451
CROSS LINED
FLUTE



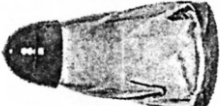
No. 473
NARROW FLUTE
WITH RIM



No. 411
TUPOR



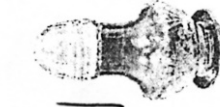
No. 54



No. 53
TWIST



No. 1252



No. 1401
EMPEROR



No. 1494
NO. 20 TOP
OLD SANDWICH



No. 1 SANITARY
SILVER PLATED TOP



No. 3 SANITARY
NICKEL PLATED TOP



No. 2 SANITARY
GLASS TOP



No. 4 SANITARY
GLASS TOP



No. 6 SANITARY
GLASS TOP



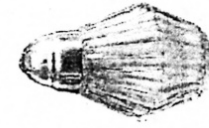
No. 5 SANITARY
GLASS TOP



No. 1425
VICTORIAN



No. 1447
No. 20 TOP
ROCOCO



No. 1469
No. 1469 1/2
RIDGELEIGH



No. 1483
STANHOPE



No. 1485
SATURN



No. 1489
PURITAN



No. 1503
No. 1503 1/2
CRYSTOLITE



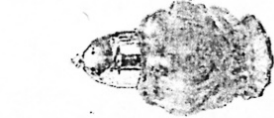
No. 1504
REGENCY



No. 1506
PROVINCIAL



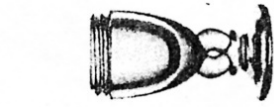
No. 1509
QUEEN ANN



No. 1519
WAVERLY



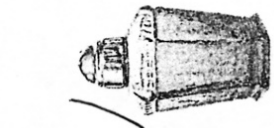
No. 1519
WAVERLY



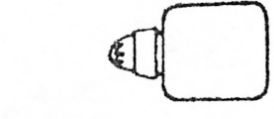
No. 1540
LARAT



No. 1567
PLANTATION



No. 1596
ZODIAC



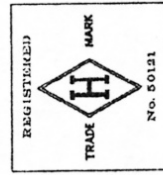
No. 1951
CABOCHON
ALSO USED
No. 10



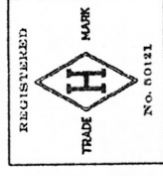
No. 6009A
ROUNDELEY



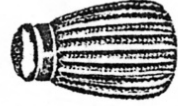
HEISEY PATTERNS SALT AND PEPPERS



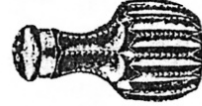
MISCELLANEOUS SALT AND PEPPERS



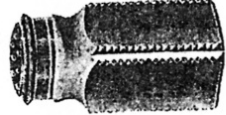
No. 1
CONCAVE



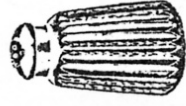
No. 2
MERIDEN



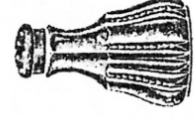
No. 3
WEBSTER



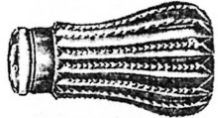
No. 4
SQUARE



No. 5
BARSTOW



No. 6
ARMENTROUT



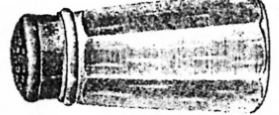
No. 8
GROOVE
AND FILE



No. 9
HEAVY
OCTAGON



No. 10
SMALL
SQUARE



No. 11
LARGE
EIGHT FLUTE



No. 1 SANITARY SILVER PLATED TOP



No. 3 SANITARY NICKEL PLATED TOP



No. 2 SANITARY GLASS TOP



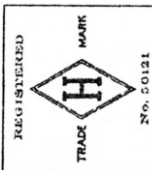
No. 6 SANITARY GLASS TOP



No. 50 SANITARY PLANTER TOP



MISCELLANEOUS SALT AND PEPPERS



NICKEL TOP



No. 57 TOP SILVER PLATED



No. 60 TOP SILVER PLATED



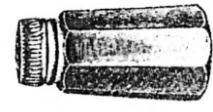
No. 41 TOP SILVER PLATED



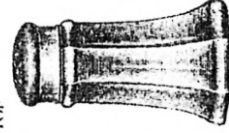
No. 41 TOP SILVER PLATED



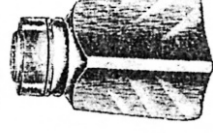
No. 12 SMALL EIGHT FLUTE



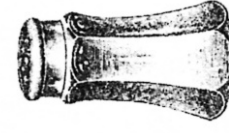
No. 13 MEDIUM EIGHT FLUTE



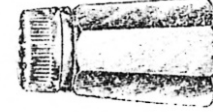
No. 14 REGAN



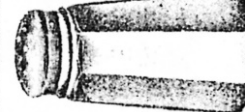
No. 15 SQUARE TAPER



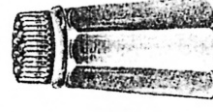
No. 16



No. 17



No. 18



No. 19



No. 21



No. 22



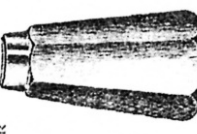
No. 23 SHORT PANEL



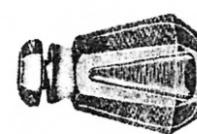
No. 24 MEDIUM PANEL



No. 25 LARGE PANEL



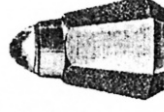
No. 27 TALL SIN PANEL UP SIDE UP



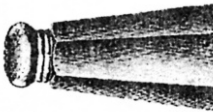
No. 28 PATENT APPLIED FOR UP SIDE UP



No. 29 SHORT DOUBLE PANEL



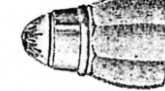
No. 30 TALL DOUBLE PANEL



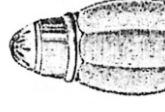
No. 31 HOLMAN



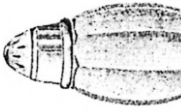
No. 32 CORBY/OLSEN



No. 34



No. 35



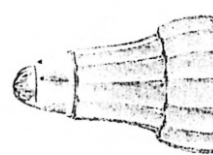
No. 36



No. 37



No. 353 INDIVIDUAL SALT GRIND BOTTOM



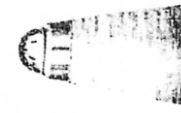
No. 353 COMBINATION SALT AND PEPPER GRIND BOTTOM



No. 39 SMALL CONE



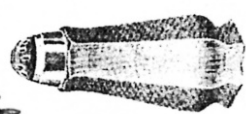
No. 40 MEDIUM CONE



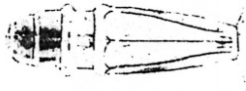
No. 41 TALL CONE



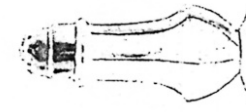
No. 42 ELEGANCE WITH NO. 117 EXPRESS EACH



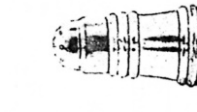
No. 44 DETROIT



No. 45 PALMYRA



No. 46 CHESHIRE



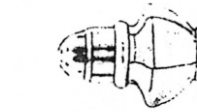
No. 47 SPOOL



No. 48 KOORS



No. 49 YORKSHIRE



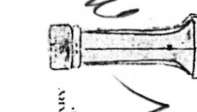
No. 50 LOUISIANA



No. 51 DRUM



No. 52 SHORT INDIVIDUAL



No. 53 TALL INDIVIDUAL



No. 57 EIFFEL