

# Marmalades, Jams, and Covered Preserves

Eric Tankesley-Clarke for Great Plains Heisey Club

May 2021

Marmalades are jellies made from fruit juice, pectin, sugar, and rind. Jams include crushed or pulped fruit. Preserves have whole fruits or large pieces of fruit. Conserves are preserves made with more than one kind of fruit.

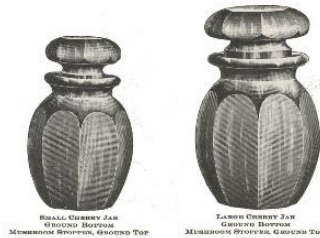
Heisey's jellies (other than jars for long-term storage) are all open (without covers) and are not included here. Heisey's preserves are often open bowls. They only called one piece a conserve, also without cover. None of those are included either.

This program includes only things Heisey specifically called marmalades or jams, covered or not, and also any preserves that were covered. Cherries are a specialized kind of preserve, so they get a place here, too. Most Heisey containers for marmalades or jams were jars with some sort of cover, frequently slotted to accommodate a spoon or ladle. Several of these pieces were called one thing in one place, and something else in another. Several marmalades doubled as horseradishes, for instance.

All are in crystal only unless otherwise noted. All are pressed unless noted as blown. They are listed in approximately chronological order.

## #341 Puritan. *Cherry jars*, 2 sizes.

Also used as tea caddies or horseradish (small) and pickle (large) and shared with #300 Peerless. Ca. 1903.

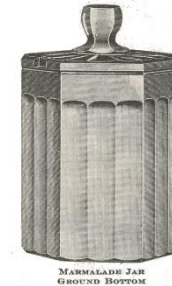


## #341 Puritan. *Marmalades*, 3 sizes.

Illustrated above from left to right are squat horseradish or cold cream jar, pin pickle or small marmalade, medium marmalade, and large marmalade. These three marmalades are the only ones with stoppers. Ca. 1903.

## #353 Medium Flat Panel. *Marmalade*.

Later merged into #341 Old Williamsburg. Ca. 1909.



**#393 Narrow Flute. *Marmalade*.** Slotted cover. Unusual shape for this pattern, causing Vogel to overlook its correct pattern number and assign it his number and name, #7051 Columned Hexagon. Ca. 1912.

## #433 Greek Key. *Cherry jars*, 2 sizes. Ca. 1912.



**#352 Flat Panel. *Marmalade*,** not an original part of #352. Identical to the #358 Joanne hotel sugar, except for the slotted cover. The cover is the same one used on the #1183 Revere, #1184 Yeoman, and #1485 Saturn marmalades and on the blown marmalades #4121-4123. Ca. 1915.



**#394 Narrow Flute. Marmalade.** Also called a horseradish. Ca. 1915.



**#1000 Maezene. Marmalade.** Slotted cover. The usual catalogue drawing shows this as 6-sided, but that is an error and the actual piece is 8-sided. A different factory drawing used in advertising correctly shows the 8 sides. Crystal, Alexandrite, and Canary (vaseline). The only marmalade known in Canary and extremely rare in that color. Ca. 1915.



**#473 Narrow Flute with Rim. Marmalade.** The cover has no slot. Ca. 1916.

**#479 Petal. Marmalade.** Same as sugar but with slotted cover. Crystal only. The sugar is illustrated. Ca. 1917.

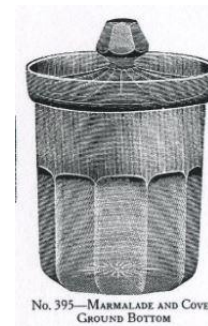


**#392 Narrow Flute. Marmalade.** Same as the #393 Narrow Flute hotel sugar, but with slotted cover. Introduced about 10 years after the sugar. Ca. 1922.

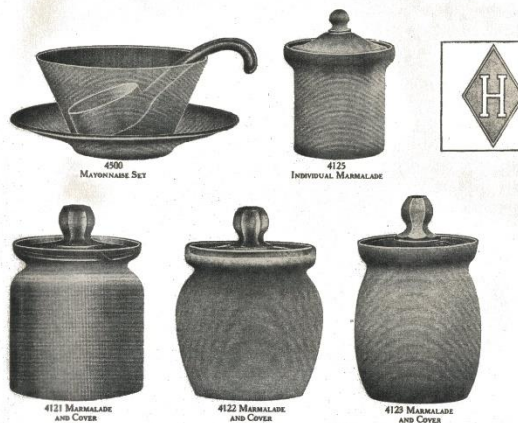
**#393 Narrow Flute. Preserve, covered,** 5½-in. This is about as wide as preserves ever were. Larger pieces were simply called covered bowls. Ca. 1922.



**#395 Narrow Flute. Marmalade.** I have seen at least three of these. All were missing their covers. The catalogue illustration does not make clear whether the cover is slotted. The cover was probably adapted to become one of the #406 or #407 Coarse Rib covers. Ca. 1922.



**#1024 Eileen. Marmalade.** Illustrated above are the sugar (left) and the mayonnaise. No illustration of the marmalade is available. Probably same as sugar, handled and with slotted cover, although it is possible the mayonnaise and the marmalade are identical. Ca. 1924.



First row: #4500 mayonnaise set, #4125 individual mustard. Second row: marmalades #4121, #4122, and #4123

**#4121 Glenn, #4122 Weaver, and #4123. Marmalades**, blown. These all use the same slotted cover as #352, #1183, #1184, and #1485 marmalades. However, see example in display for a cover with rounded knop. Ca. 1922.

**#4125. Individual marmalade**, blown. See above for comparison with regular-sized marmalades. Why this is not called a mustard is anyone's guess. Ca. 1922.

**#4124. Preserve, covered**, blown. The #3335 Lady Leg finger bowl is the bottom and also used in the #4500 mayonnaise set shown above and as finger bowl in #3404 Spanish and other patterns. Preserve cover with no slot. Ca. 1922.



**#4181. Marmalade**, blown, appearance unknown.



**#1184 Yeoman. Marmalade.** Except for the slotted lid, identical to the #1183 Revere ¼-lb. candy, which, in turn, is the same as the #1183 footed sugar. Ca. 1922.

**#1183 Revere. Marmalade.** This uses the same body as the horseradish. According to early catalogue illustrations, the only difference is that the horseradish has a slotted cover but the marmalade has a solid cover. Except see the illustration of the marmalade with #693 Cloister cut, where it clearly has a spoon slot. Ca. 1922.



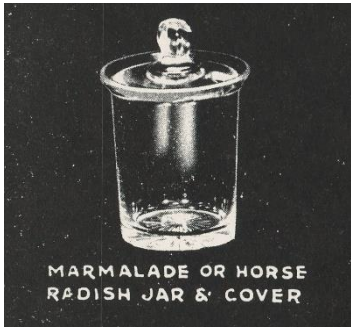
**#411 Tudor. Preserve, footed, covered.** The cover does not have a slot for a spoon. Without the cover, the same piece was called a grapefruit. Crystal, Flamingo, Moongleam,

Hawthorne. The grapefruit was made in Marigold, but probably not the preserve cover. Ca. 1925.



**#1170 Pleat and Panel. Marmalade.** Besides being footed, this marmalade is unusual in having no cover. One would have expected this to be called a preserve. Crystal, Moongleam, Flamingo. Ca. 1925.

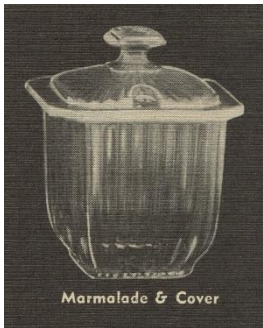




**#1184 Yeoman. Marmalade.** Identical to the #1183 Revere marmalade. Always illustrated with a star

bottom, even though most Yeoman pieces have plain, concave bottoms (marie bottoms). By the time the marmalade was renumbered, it was illustrated with a slotted cover. Not listed in colors and no colored ones seen. *Ca.* 1929.

**#1401 Empress. Marmalade,** dolphin-footed. Slotted cover. See #1509 Queen Ann for illustration of shape. Due to its low, broad shape, typically would have been called a preserve rather than a marmalade. Crystal, Flamingo, Moongleam, Sahara, Alexandrite, Stiegel Blue (cobalt). *Ca.* 1930.



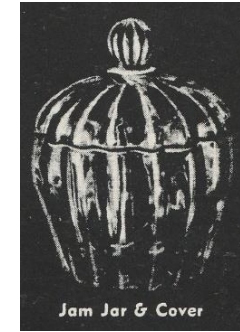
**#1469 Ridgeleigh. Marmalade.** Made from the same mould as #473 Narrow Flute with Rim after some alterations. A slot was made in the cover, unlike its predecessor. *Ca.* 1936.

**#1485 Saturn. Marmalade.** Identical to the #1184 Yeoman marmalade, except made with Saturn optic. Slotted cover. Crystal and Zircon. See also the Domesti-Cater unit #7, offered in the 1950's. *Ca.* 1936. Also made by Imperial.



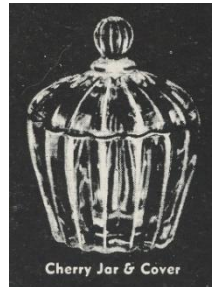
**#341 Old Williamsburg. Marmalade.** Identical to #353 Medium Flat Panel. Now specified as a 7-oz. marmalade. *Ca.* 1937.

**#1503 Crystolite. Preserve, covered.** Same as the 2-handled jelly, but covered. No slot. *Ca.* 1938.



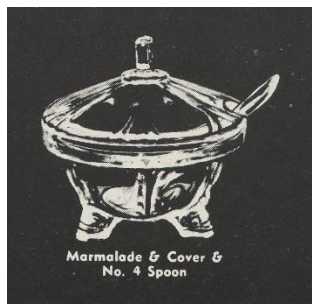
**#1503 Crystolite. Jam jar.** Slotted cover. *Ca.* 1938.

**#1503 Crystolite. Cherry jar.** Same shape as the jam jar, but smaller and with solid cover. *Ca.* 1938.



**#1506 Whirlpool. Marmalade.** Body is identical to the tumbler, but with slotted cover added. The mustard is illustrated, same idea using the oyster cocktail. The cover is ornamented to be recognizable as Whirlpool. Made only a limited time in the early 1940's, well before the name Provincial was used. Crystal only. *Ca.* 1944.



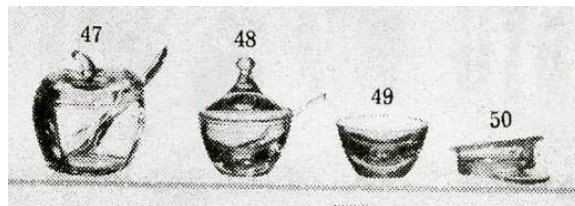
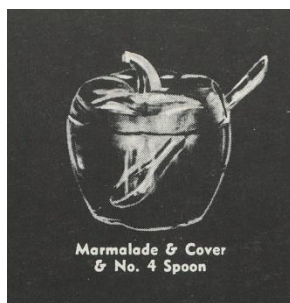


**#1509 Queen Ann.**  
**Marmalade,**  
dolphin-footed.  
Identical to #1401  
Empress except  
Empress is plain  
and Queen Ann  
has an optic.  
Crystal only.

Listed with a #4 marmalade spoon, but  
a #9 Queen Ann mayonnaise ladle was  
also available.  
The ladle has  
a scroll finial  
and wings  
along the  
sides of the  
handle. Ca.  
1938.

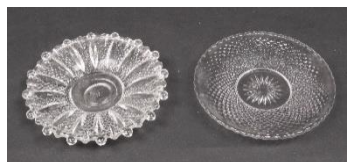


**#1511 Toujours.**  
**Marmalade,**  
apple-shaped. In  
later years, the  
original pattern  
name was  
dropped and it  
was simply  
catalogued as the  
Apple marmalade.  
Ca. 1938.

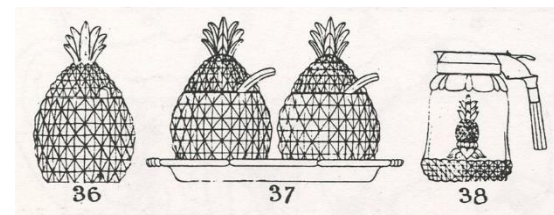


Left to right: #1511 marmalade, #5012  
mustard, #5012 salt, #1536 ash tray

**#5012 Urn. Marmalade.** The  
marmalade was probably a larger  
version of the mustard illustrated  
above. Possibly used the same cover  
as the #4124 preserve. The mustard cover  
was slotted; the marmalade cover may  
or may not be. In their book, *Heisey  
Glass, 1869-1957*, the Bredehofts were  
reluctant to include this in the same  
pattern as the Urn vases, but  
indications are that the factory did  
consider these together as one pattern.  
Ca. 1943.



**#1535 Diamond. Individual  
marmalade,** pictured above (left) with  
#1454 Diamond Point. This is the only  
example of a plate being called a  
marmalade. The corresponding #1454  
Diamond Point plate that is more  
commonly found was called an  
individual jelly by Heisey. Arbitrary  
much? Ca. 1944.



**#1567 Plantation. Marmalade.** Sold  
singly or as pair on tray. Also sold on  
tray, paired with syrup, and called a  
breakfast set. Always  
catalogued with #7  
mayonnaise ladle, but  
a special #12  
Plantation ladle was  
available for  
mayonnaise bowls or  
marmalades. Ca.  
1947.



**#1593 Prism. Marmalade.** Also called  
a jam jar. Slotted cover. Sometimes  
found ground and  
polished overall. A  
non-Heisey similar  
pattern in lead  
crystal, probably  
European, has  
facets with curved  
edges, not straight  
as in Prism. Ca.  
1948.







**#8048. Marmalade.** Experimental piece (note the poorly finished irregular shape) and probably unique. Probably made around 1950 in trials with

various formulas for black glass.

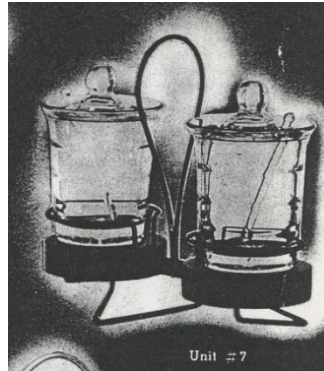
Possibly made from a #341 Puritan pickle jar or tall horseradish mould, jars illustrated here for comparison. Black only.



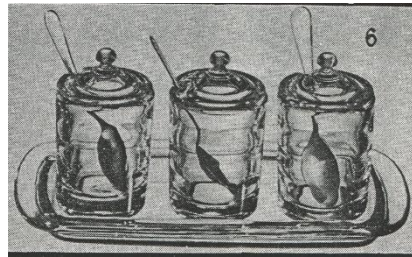
PICKLE JAR, GROINED BOTTOM, MUSHROOM STOPPER, GROINED TOP



TALL HORSE RADISH JAR, GROINED BOTTOM, MUSHROOM STOPPER, GROINED TOP



**Domesti-Cater Unit #7. Marmalade set** consisting of two #1485 Saturn marmalades with small glass spoons, mounted in a wire-and-wood stand. 1953.



**#1485 Saturn. Jam set.** Three mustards with metal spoons were placed on a #1951 Cabochon tray and sold as a jam or sauce set. Ca. 1955. Jars and tray also made by Imperial.



**#6009A Roundelay. Marmalade,** blown. Made using a #4045 Heron 4-in. ball vase mould. Sold with or without a glass cover. This is the only piece of Roundelay for which no factory illustration has surfaced. The appearance of the glass cover is unknown. Dawn; possibly made in crystal. The example shown here uses the same underplate as the Revere mayonnaise, which is how it was found. 1953.