

A.H. HEISEY & Co., N E W A R K, O H I O
No. 1503 CRYSTOLITE PATTERN

Pattern 1503

FREQUENTLY ITEM SEEN
F = FREQUENTLY SEEN
S = SOMEWHAT FREQUENTLY
R = RARELY SEEN

No.	Size	Item	Freq. Item Seen
1-5003	10 oz.	Goblet, Wide Optic, Blown	S
2-5003	3½ oz.	Claret, Wide Optic, Blown	R
3-5003	6 oz.	Sherbet (S. Champ.), Wide Optic, Blown	F
4-5003	3½ oz.	Cocktail, Wide Optic, Blown	S
5-5003	1 oz.	Cordial, Wide Optic, Blown	R
6-5003	3½ oz.	Oyster Cocktail, Wide Optic, Blown	R
7-5003	5 oz.	Footed Juice, Wide Optic, Blown	S
8-5003	12 oz.	Footed Ice Tea, Wide Optic, Blown	S
9-5003	10 oz.	Tumbler, Wide Optic, Blown	R
11-5003	12 oz.	Ice Tea, Wide Optic, Blown	S
12-1503	10 oz.	Tumbler, Pressed	S
13-1503	½ gal.	Ice Jug, Blown	S
14-1503		Individual Oval Sugar	F
15-1503		Individual Oval Cream	F
16-1503	5½ in.	Individual Oval Sugar & Cream Tray	S
1503	3 pc.	Oval Cream, Sugar & Tray	S
17-1503		Sugar	F
18-1503		Cream	F
19-1503		Cup and Saucer	F
1503		Cup	F
1503		Saucer	F
1503	7 in.	Salad Plate	F
20-1503	8½ in.	Salad Plate	S
1503	10½ in.	Service Plate	R
21-1503	4 in.	Coaster	F
22-1503		Syrup Bottle with Drip Cut Top (Chrome Plated with Plastic Handle)	R
1503		Syrup Bottle without Top	R
23-1503	3 oz.	Oil Bottle & No. 110 Stopper	S
24-1503		Salt or Pepper with #55 Chrome Plated Top	S
1503		Salt or Pepper with #58 Silver Plated Top	S
1503		Salt or Pepper with #50 Plastic Top	S
25-1503	11 in.	Party Plate (Torte)	S
1503	14 in.	Party Plate (Torte)	S

26-1503	12 in.	Sandwich Plate	S
1503	14 in.	Sandwich Plate	S
27-1503	14 in.	Sandwich Plate & 5½ in. Footed Cheese	S
28-1503	5½ in.	Footed Cheese	F
29-1503	5 in.	Footed Comport, Deep	S
31-1503	6 in.	Oval Jelly, Four Footed	R
32-1503	5 in.	Breakfast Preserve	F
33-1503	9 in.	Leaf Pickle	S
35-1503	3 pc.	Thousand Island Dressing Set	R
1503	5 in.	1000 Island Dressing Bowl (Rd.)	S
1503	7 in.	1000 Island Dressing Bowl Plate	S
7		Mayonnaise Ladle	R
36-1503	3 pc.	Oval Mayonnaise Set	R
1503	6 in.	Oval Handled Mayonnaise	S
1503	8 in.	Oval Plate	S
7		Mayonnaise Ladle	R
37-1503	8 in.	2-Compartment Handled Conserve	S
38-1503½	12 in.	3-Compartment Relish	S
1503½	12 in.	Celery Tray	S
39-1503	8 in.	3-Compartment Relish	F
40-1503	9 in.	4-Compartment Clover Leaf Relish	F
41-1503	10 in.	5-Compartment Round Relish	F
42-1503	7 in.	Shell Plate	R
43-1503	7 in.	Shell Bonbon or Relish	R
44-1503	7 in.	Shell Praline	R
45-1503	7 in.	Candy Box and Cover	S
1503	7 in.	Candy Box without Cover	F
46-1503	5½ in.	Shell Mayonnaise, 3 Footed	S
47-1503	5½ in.	Shell Candy Box with Cover	R
48-1503	4 in.	Round Ash Tray or Coaster	F
49-1503	3½ in.	Square Ash Tray	F
50-1503	4½ in.	Square Ash Tray	S
51-1503	4 in.	Cigarette Box and Cover	F
1503	4½ in.	King Size Cig. Box & Cover	F
52-1503	3 in.	Individual Nut Dish, Handled	S
53-1503	2 in.	Ind. Swan Nut Dish or Ash Tray	S
54-1503	6½ in.	Swan Candy or Jelly	S
55-1503	8 in.	Dessert or Sauce Dish (Nappy)	S
1503	5½ in.	Dessert or Sauce Dish (Nappy)	S
56-1503	4½ in.	Dessert or Sauce Dish (Nappy)	S
57-1503	10 in.	Square Shallow Floral Bowl	S
58-1503	12 in.	Oval Shallow Utility Tray	S
59-1503	10 in.	Salad Bowl, Round	S

61-1503	12 in.	Shallow Floral or Gardenia Bowl	S
62-1503	13 in.	Oval Floral Bowl, Deep	S
63-1503	3 lt.	Candlestick with #4233 – 5 in. Vase	R
1503	3 lt.	Candlestick without Vase	F
64-1504	2 lt.	Candlestick	F
65-1503	1 lt.	Candleblock	F
66-1503	1 lt.	Candleblock	S
67-1502	1 lt.	Swirl Candleblock	S
68-1503	1 lt.	Footed Candlestick	F
1503	1 lt.	Footed Candlestick with #4233 – 5 in. Vase	R
69-1503	6 in.	Footed Vase, Flared	S
70-1503	1 lt.	Sq. Hurricane Block with #4061 10" Plain Globe	R
1503	1 lt.	Sq. Hurricane Block or Candlestick	S
71-1503		Punch or Custard Cup	F
72-1503	7½ qt.	Punch Bowl	S
73-1503	20 in.	Buffet or Punch Bowl Plate	R
11		Glass Punch Ladle	R
10		Plastic Punch Ladle	S
74-1503	15 pc.	Punch Set, Consists of: Punch Bowl, Buffet Plate, Glass Ladle, 12 Punch Cups	R
75-1503½		Swan Handled Pitcher	R
76-1503	7 in.	Preserve Dish	S
77-1503	7 in.	Preserve Dish Plate	S
78-1503	11 in.	Center Piece	R
79-1503	5 in.	Ash Tray Book Match	R
80-1503	3 in.	Short Stem Flower Vase	S
81-1503	3 in.	Round Cigarette Holder	F
82-1503	3 in.	Rd. Ash Tray or Hi Ball Coaster	S
83-1503	2½ in.	Oval Cigarette Holder	S
84-1503	4 in.	Footed Cigarette Holder	S
85-1503		Jam Jar & cover (Slot for Spoon in Top)	S
86-1503		Cherry Jar and Cover (Solid Top)	R
87-1503	7 in.	Flower Urn	R
88-1503	12 in.	Celery & Olive	S
89-1503	12 in.	Celery Tray	S
90-1503	13 in.	Relish 3-Compartment Oval	S
91-1503	13 in.	Oval Tray	S
92-1503	2 lt.	Candlestick with Bobeche & 10 "D" Prisims (Also available without B's and P's)	R
93-1503	5 in.	Jelly, 1 Hld. (Spider Web Bottom)	F
94-1503	5½ in.	Footed Chocolate	F
95-1503	7 in.	Pickle	S
96-1503¼	2¼ in.	Candleblock (Melon) Gr. Bot.	R

97-1503	5 in.	Footed Jelly	F
98-1503¾	2½ in.	Candleblock (Cylinder) Gr. Top & Bot.	R
99-1503		Mayonnaise, 2 Compartment	S
100-1503	5 in.	Jelly, 1 Hld. 3 Cornered (Spider Web Bottom)	F
101-1503		Oval Nut Comport	R
102-1503½		Salt & Pepper	R
103-1503½		Cigarette Lighter	R
104-1503½		Sugar, Round	R
105-1503½		Cream, Round	R
106-1503	4½ in.	Puff Box & Cover	S
107-1503	3½ in.	Mustard & Cover & No. 10 Paddle	S
108-1503		Ice Tub & Silver Pl. Handle	S
109-1503	7 in.	Bon Bon, 2 Hld.	F
110-1503	6 in.	Jelly, 2 Hld., 2 Compartment	F
111-1503	6 in.	Jelly, 2 Hld.	F
112-1503	6 in.	Oval Pickle	S
113-1503	6 in.	Preserve, 2 Hld. & Cover	S
114-1503		Hollandaise Sauce Bowl & 8" Oval Platte	S
115-1503	7 in.	Snack Plate, 2 Hld.	F
116-1503	7½ in.	Coupe Plate	S
117-1503	13 in.	Coupe Plate (Torte)	R
118-1503	9 in.	Floral Bowl Touraine	R
119-1503	11½ in.	Floral Bowl Round	S
	10½ in.	Floral Bowl Round	S
	9½ in.	Floral Bowl Round	S
120-1503	12 in.	Fruit Bowl	R
121-1503		Gardenia Bowl	R
122-1503	11 in.	Cake Salver Footed	R
123-1503	6 in.	Basket	R
124-1503	7 in.	Shell Plate	R
	4 in.	Shell Plate	R
	10½ in.	Shell Plate	R
	13½ in.	Shell Plate	R
125-1503	13 in.	Shell Relish	R
126-1503	11 in.	Shell Comb. – Salad & Mayo	R
127-1503	11 in.	Shell Salad Bowl	R
128-1503	4 oz.	Bitter Bottle & Short Tube	R
129-1503	4 oz.	Cologne Bottle & No. 103 Stopper	R
130-1503	1 qt.	Cocktail Shaker, No. 1 Strainer & No. 86 Stopper	R
131-1503	1 qt.	Rye Bottle & No. 107 Stopper	R
132-1503		Round Hurricane Block, Candlestick or Lamp	R
133-5003	5 in.	Comporte, Wide Optic Blown	R
134-5003		Finger Bowl, Wide Optic, Blown	R

135-1566	Banded Crystolite Candleblocks	R
136a-1504	Regency Candleblock	R
136b-1504	Regency Puff Box	R
136c-1504	Regency Cologne	R

PICTURES NOT AVAILABLE OF THE FOLLOWING ITEMS WHICH HAVE BEEN REPORTED

Footed Pressed Tumbler	R
5 lb. Round Footed Chocolate Jar	R
Vase: 12" – 15" Swing	R
Vase: 10" – 12" Swing	R
Vase: 9" Calendula	R
Vase: 9" Lily, Cupped	R
Vase: 9" Aster, Flared	R
Vase: 9" Footed Straight	R
Vase: 15" – 18" Footed Swing	R
Vase: 18" – 21" Footed Swing	R

THE INFORMATION INCLUDED IN THIS BOOKLET CAME FROM THE FOLLOWING SOURCES:

1. #1503 Crystolite — By: Louise Ream, Heisey News, Vol. 412, Dec.1972
2. Heisey's Glassware of Distinction — By: Mary Louise Burns
3. The Birth of a New Pattern - By: Fred Bosworth, Heisey News XII, *10. 1983
4. Heisey by Imperial and Imperial glass by Lenox — By: Newark Heisey Collectors Club
5. Heisey's Early and Late Years 1896 - 1958 Book IV — By: Clarence W. Vogel
6. Heisey Hand-Wrought Crystal Catalog and Price List No. 32 - Jan. 1953

THE RATING REGARDING FREQUENCY ITEMS HAVE BEEN SEEN IS BASED ON PERSONAL COLLECTING EXPERIENCE BY Joyce and Bob Dickman and Judy and Ken Rhoads.

A.H. HEISEY & Co., N E W A R K, O H I O
No. 1503 CRYSTOLITE PATTERN

THE BIRTH OF #1503 AND #1503½ CRYSTOLITE

Fred Bosworth, a Heisey Glassware salesman from 1937 to 1952 gave the following account of how and why the Crystolite line was born. He reported that A.H. Heisey and Co. had been struggling through the Depression until they brought out #1469 Ridgeleigh line in 1935. Heisey quickly became the hottest line in the market. All went well until Anchor—Hocking Glass Co. came out about 1937 with an almost exact copy of Ridgeleigh. This copy was sold mostly to chain stores which retailed it for five and dime prices. The Heisey accounts quickly started to drop Ridgeleigh as the copy was so very close.

Heisey didn't take this lying down. They had been searching for some time for something which would be more difficult to copy by machine. Mr. Bosworth's first assignment for Heisey Co. was to go to a famous glassware store on Fifth Ave. in New York and purchase a certain heavy cigarette box and ash tray which Heisey had been observing for some time. Mr. Bosworth was sent because Clarence Heisey and associates were already known to the prestigious store owners. It was a set made in Czecho—Slovakia and Heisey adapted it to their lines.

This set of heavy ribbed cigarette box and four ash trays was first introduced to the trade at \$2.00 retail under the name of "Mahabar" #1496. Of course this became "Crystolite" and from this cigarette box and ash trays Heisey quickly made scores of items which became a very popular and profitable line. It was still listed in the 1956 catalog in over 70 items. There are also several items in the #1503½ line and in the closely related #1504 Regency line.

#1503 AND #1503½ Crystolite GLASSWARE

The glass is fairly heavy and is very brilliant, clear and reflects light beautifully. All pieces are covered with raised ribs which are wider than those of Ridgeleigh and are smoothly rounded instead of sharp.

These ribs extend from top to bottom on vertical items and from the edge of the ground and polished bottom rim to the outer edge of plates and bowls, gradually widening near the outer edge to form scallops.

On other pieces the ribs may cover the entire bottom and ray out from the center and continue to the top edge. Plates, bowls and relishes were made both with plain bottoms and with star pattern bottoms. Many pieces are signed but a great many are not. The star bottom pieces are marked more often than plain bottom pieces.

Two small jelly nappies which have a handle, one being round and one three cornered have a "spider web" design on the bottom. These are only occasionally marked.

Crystolite came in a complete line of table and barware. There was a blown stemware line of at least eleven items. The stemware is seen with several cuttings. A pressed goblet has been seen but probably was not a production item. The water pitcher was also blown and is unmarked.

#1503, #1503¼, #1503½, #1503¾, AND #1566 CRYSTOLITE CANDLESTICKS

Crystolite has more candlesticks than any other Heisey line. These include three candlesticks and six candleblocks which are particularly brilliant, beautifully ground and polished on the bottom.

#1503 CRYSTOLITE IN COLOR

Most Crystolite was produced in clear crystal. Some pieces have been produced in Zircon, Sahara, and is rare in Amber. Clarence Vogel reported to have owned one piece in Cobalt. Pieces have been found in Dawn with a question as to whether they are Heisey or Imperial Charcoal.

#1503 CRYSTOLITE SHELL LINE

The 1944 catalog listed twelve shell pieces. Many of these are unsigned but those few which are usually have the "diamond H" on the plain part of the shell which would be the hinge of the shell.

#1504 REGENCY

#1504, known as Regency is a variant of Crystolite and comes in only a few items. The convex columns are smaller in the Regency pattern than they are in the Crystolite pattern. In a 1944 catalog six items are listed, namely; candy box, puff box, cologne, salt, candlestick and candleblock.

#1503 CRYSTOLITE REISSUED BY IMPERIAL GLASS COMPANY

Some items were reissued by Imperial and may be signed. They were made until 1962. The items reissued by Imperial include:

- Salt and Pepper
- 7" Candy and Cover
- 14" Party Plate
- 9" Leaf Pickle
- Candy Box and Cover
- 3" Square Ash Tray
- 3" Individual Nut Dish (Leaf)
- 5½" Nappy
- 8" Dessert Nappy
- 2 Lite Candlestick
- 1 Lite Candlestick
- 1 Lite Candleblock
- 15 Piece Punch Set

All of these were made from 9-1-57 to 1-1-62 with the square ash tray being made until 1965. A 4½" nappy was made for special order for Woodward and Lathrop. on 5-2-60 and the 10" salad bowl for Fisher Silversmith on 3-3-60. Both of these were made in charcoal.

CRYSTOLITE LOOK-A-LIKES

Numerous pieces of other glassware resemble Crystolite and can be confusing. The Duncan Miller's "cascade" pattern looks very much like Crystolite. A pair of candleblocks made in Taiwan looks very much like Rosette candleblocks but are about one third again smaller than the Heisey originals. Also their quality is poor when compared to the Heisey blocks. A four inch square candleholder resembles the 4" Crystolite ash tray but indeed is not Heisey. These candleholders have been seen at Apple Tree Auction but were identified as not Heisey. There is a line of glassware which resembles Crystolite which has a bubble design on the bottom making identification easy as Heisey did not use this design on Crystolite.

KEEPING IN TOUCH

Louise Ream

Several years ago, I loaned the museum a *Black* 1503 Crystolite 10" bowl (looks like the Crystal Crystolite floral bowl pictured on the cover). At the time, I believed that it was made by Imperial. A few years later a former employee gave me some papers which contained a letter dated November 13, 1952 written to Joe Lower who was in charge of the New York City office. It was an order from *Old Silver Classics*, a company that made various types of silver or silver plate holders for glass bowls of many kinds. Heisey was the supplier of the bowls. Since Heisey did make *Dawn*, the company had asked for the *Black* 10 inch floral bowls. They also said that they had asked for *Black* before but it wasn't being made at that time. It was then that I realized that I probably had one of those bowls. The bowl had been displayed with the Imperial Glass in the lower level of the museum but was moved to the first floor. Its value has increased now that it is known to be a rare piece of Heisey *Dawn*.

I don't believe that we have ever given a date for the Heisey glass mail box, which is in the doorway between rooms 7 and 8 of the King House. It was made around September 1, 1942 and uncut ones sold for \$24.00 a dozen. The fixtures for it cost \$30.00 a dozen. I assume that was the wholesale price. The one referred to here had at one time been on Edgar Wilson Heisey's house.

Not long before I left the museum in 1990, we purchased some 6-1/2" square plates. I recently found out that they were made for the Warren-Kessler firm in New York City. The ones which we have vary somewhat in size and probably are experimental. They were displayed in the lower level for a few years but will now move to the new building along with the rest of the Heisey glass from the lower level. The pattern of these plates is #1544 square.

Warren

Kessler is the same company which bought the bottoms of Crystolite low candy boxes and used metal lids on them. They added various decorations on the lids which include the #1503 Crystolite candle block which was drilled



and sometimes had metal leaves. They also used glass grapes and *Fostoria* colts and finials.

The West Point Crest was used on the #5024 Oxford stemware which includes the goblet, champagne, cocktail, ice tea with sham, 8 oz highball also with sham and possibly other items. Imperial used the same Oxford pattern for this crest, though I do not know how many different items they made. There is really no way to tell the difference between Heisey's and the Imperial pieces.



FORT WILLIAM HENRY ETCH

George Reynolds

This etch was first shown in Vogel's *Newscaster*. Mr. Vogel felt that it was ordered by the government for use at the Fort. Later information reveals that it was a custom etch ordered by the Fort William Henry Motor Inn. This Inn is still



operating at Lake George, New York. The Fort, that was built in 1757 by the British, now operates as a museum with artifacts from the 1757-90 displayed. The French captured the Fort during the French & Indian War. Since it was located at the southern tip of Lake George, it was of extreme importance during that period. This Fort was used in the movie *The Last of the Mohicans*. The etch, as shown with drawings, is a "deep plate" type with a military motif. The hotel ordered the etch on plain paneled glassware. The #351-355 ale or sham, tumblers & #21 candles were among the Heisey items used. This etch is rarely seen (The information about Fort William Henry etching was provided by David Curley. His grandson, Nathan, pictured below did the drawings on the glass.)



NO. 5003 - CRYSTOLITE - PATTERN

H
A
N
D
M
A
D
E

L
A
S
S
W
A
R
E



10 oz.
Goblet Low Foot

1



3 1/2 oz.
Claret

2



6 oz.
Sherbet

3



3 1/2 oz.
Oyster Cocktail

6



5 in.
Comport

133



Finger Bowl (4080)

134



10 oz.
Tumbler Regular

9



12 oz.
Soda Regular
Also made 5 oz.

11



5 oz.
Iced Soda
Also made 12 oz.

7

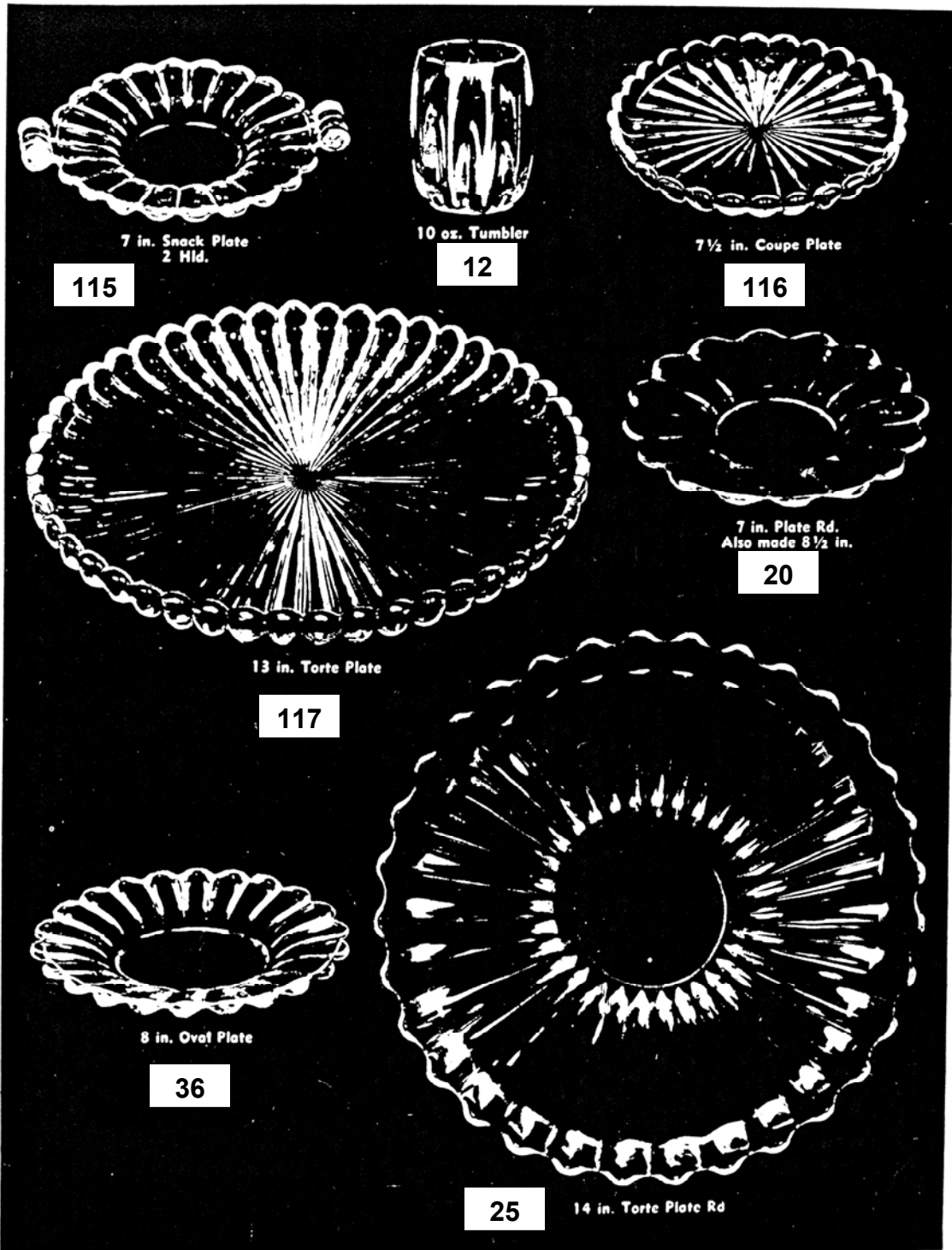


3 1/2 oz.
Cocktail

4



No. 1503 CRYSTOLITE PATTERN



H
A
N
D
M
A
D
E

G
L
A
S
S
W
A
R
E



No. 1503 CRYSTOLITE PATTERN (Continued)



3 oz. Oil Bottle
& No. 110 P.S.

23



4 oz. Cologne Bottle
& No. 108

129



4 oz. Bitter Bottle
& Short Tube

128



1 qt. Cocktail Shaker—
No. 1 Stainer
& No. 86 P.S.

130



1 qt. Rye Bottle
& No. 107 P.S.

131

H
A
N
D
M
A
D
E

G
L
A
S
S
W
A
R
E

A. H. HEISEY & CO.,



NEWARK, OHIO

No. 1503 CRYSTOLITE PATTERN (Continued)

H
A
N
D
M
A
D
E

G

A
S
S
W
A
R
E



4 in.—1 ft. Candlestick

68



1 ft. Hurricane Block
or Candlestick

70



2 in. Candleblock

65



3 ft. Candlestick

63



12 in. Celery & Olive

88



2 ft. Candlestick Bobèche &
10 "D" Prisms

92



12 in. Celery Tray

89



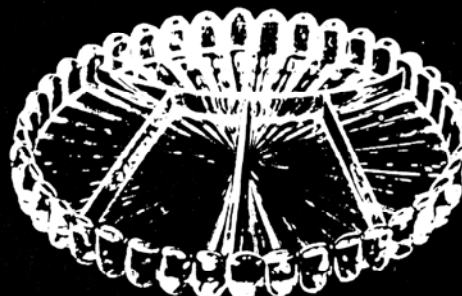
8 in. Relish
3 Compt.

39



13 in. Relish
3 Compt. Oval

90



10 in. Relish
5 Compt.

41



13 in. Oval Tray

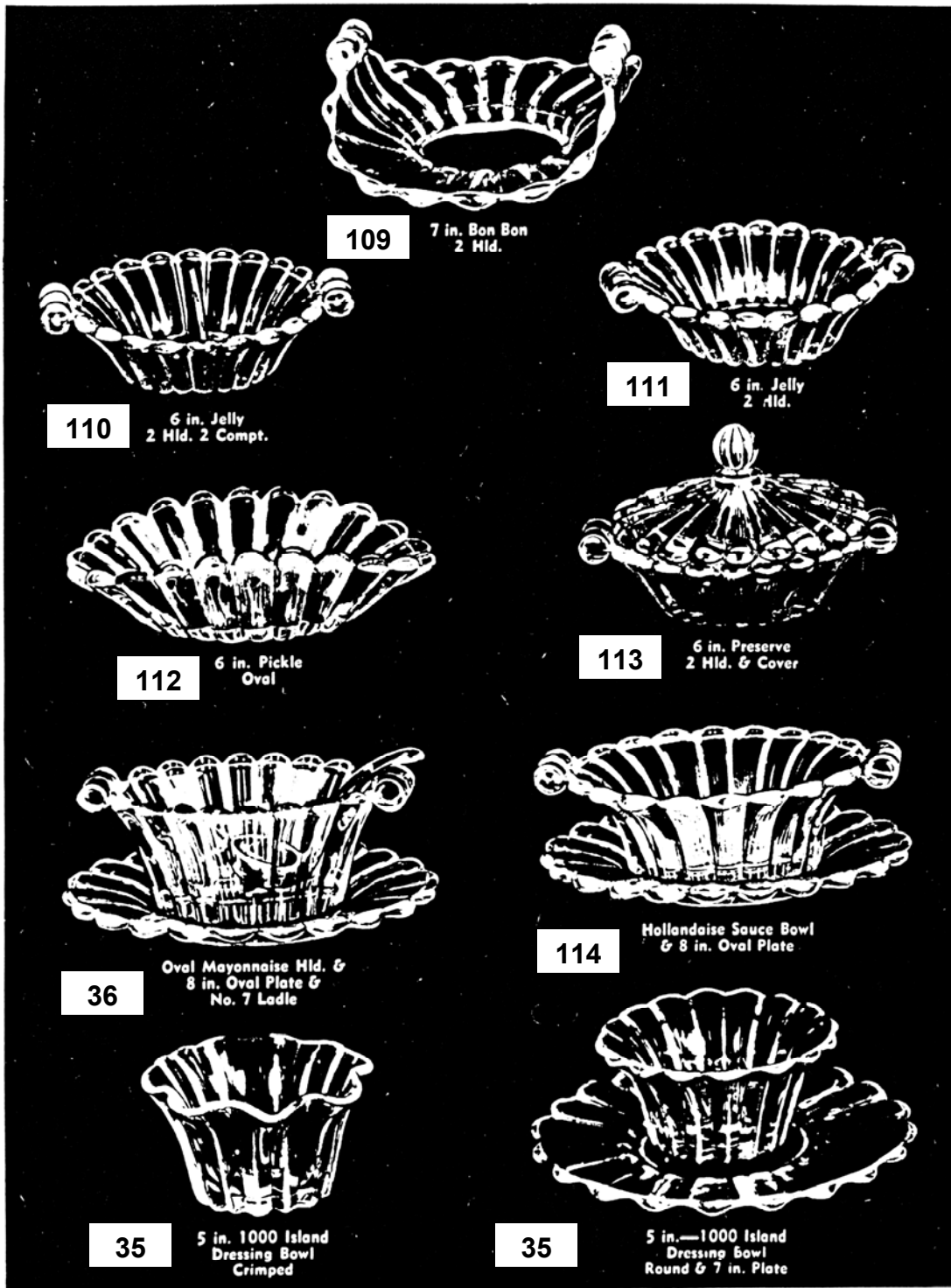
91

A. H. HEISEY & CO.,



NEWARK, OHIO

No. 1503 CRYSTOLITE PATTERN



H
A
N
D
M
A
D
E

G
L
A
S
S
W
A
R
E

A. H. HEISEY & CO.,



NEWARK, OHIO

No. 1503 "CRYSTOLITE" PATTERN (Continued)

H
A
N
D
M
A
D
E

G
L
A
S
S
W
A
R
E



5 in. Ash Tray
Book Match

79



3 in. Short Stem Flower Vase

80



Oval Ind. Sugar &
Cream & Tray

16



3 1/2 in. Ash Tray Square

49



4 in. Cigarette
Box & Cover

51



Cigarette Holder Rd.

81



Ash Tray Rd. or
Hi-Ball Coaster

82



Cigarette Holder Frd.

84



4 in. Coaster

48



Cigarette Holder Oval

83



Sugar

17



4 1/2 in. Nappy
Also made 5 1/2 & 8 in.

56



Jam Jar & Cover

85



Cream

18



Cherry Jar & Cover

86



7 in. Candy Box & Cover
Also made 3 Compt.

45

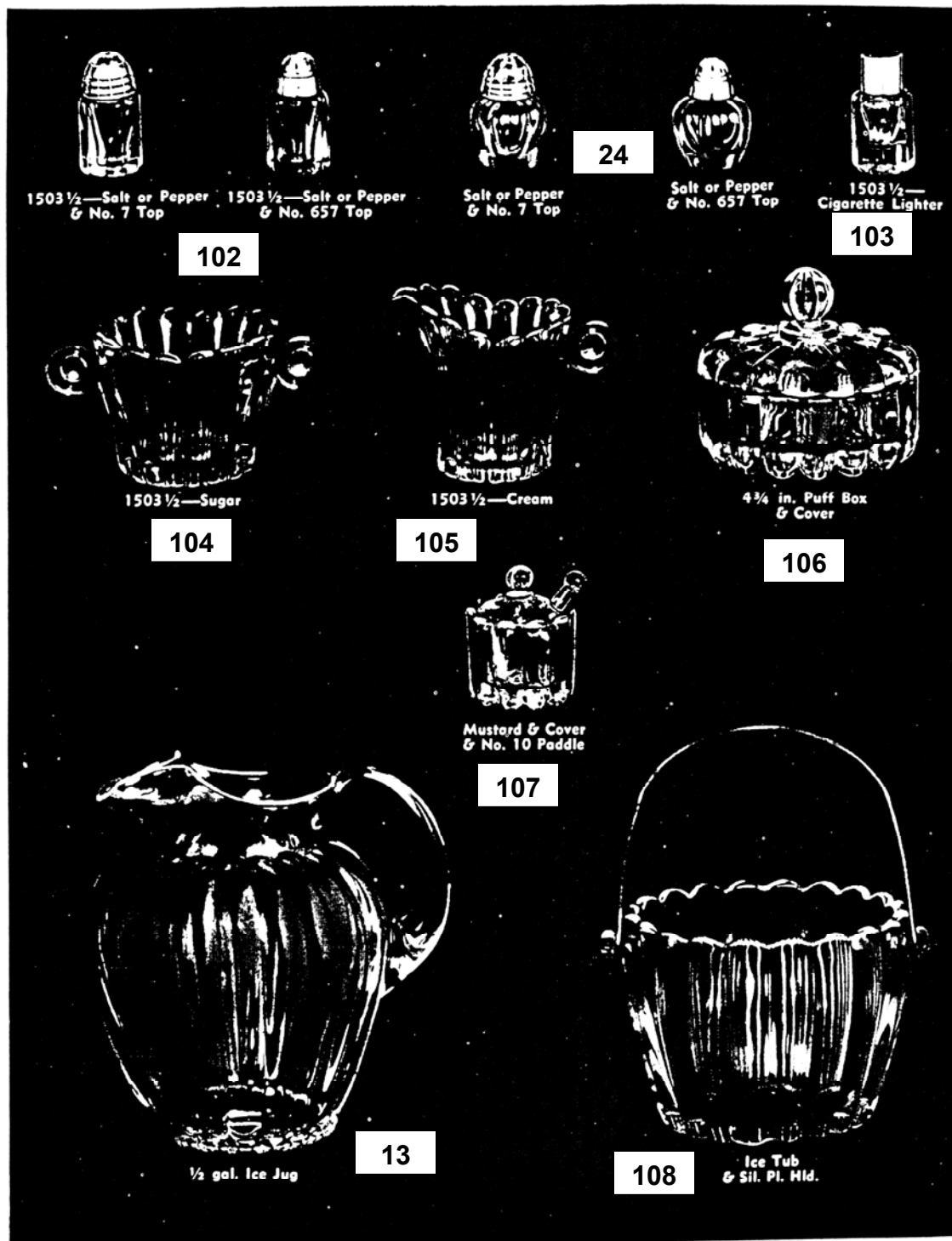


7 in. Flower Urn

87



No. 1503 "CRYSTOLITE" PATTERN (Continued)



H
A
N
D
M
A
D
E

G
L
A
S
S
W
A
R
E

A. H. HEISEY & CO.,



NEWARK, OHIO

No. 1503 CRYSTOLITE PATTERN



19 1503—Cup & Saucer



71 1503—Custard or Punch Cup



37 1503—Conserve, 2 Compart., Hld.



1503—4" Ash Tray

50



32

1503—Breakfast Preserve



69

1503—6" Vase, Ftd., Flared

51

1503—King Size
Cigarette Box & Cover



1503—7" Preserve Dish

76



77

1503—7" Preserve Dish Plate



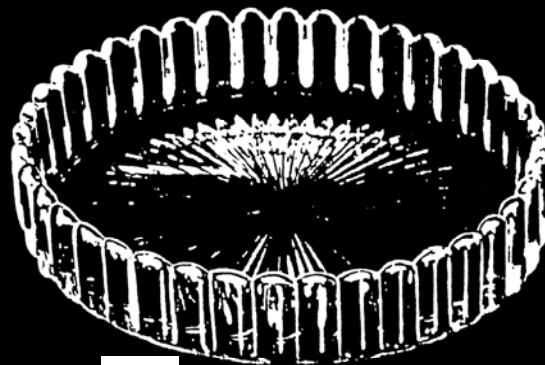
69

1503—6" Vase, Ftd., Regular



40

1503—Cloverleaf Relish
& Compt.



78

1503—11" Center Piece

H
A
N
D
M
A
D
E

G
L
A
S
S
W
A
R
E

A. H. HEISEY & CO.,

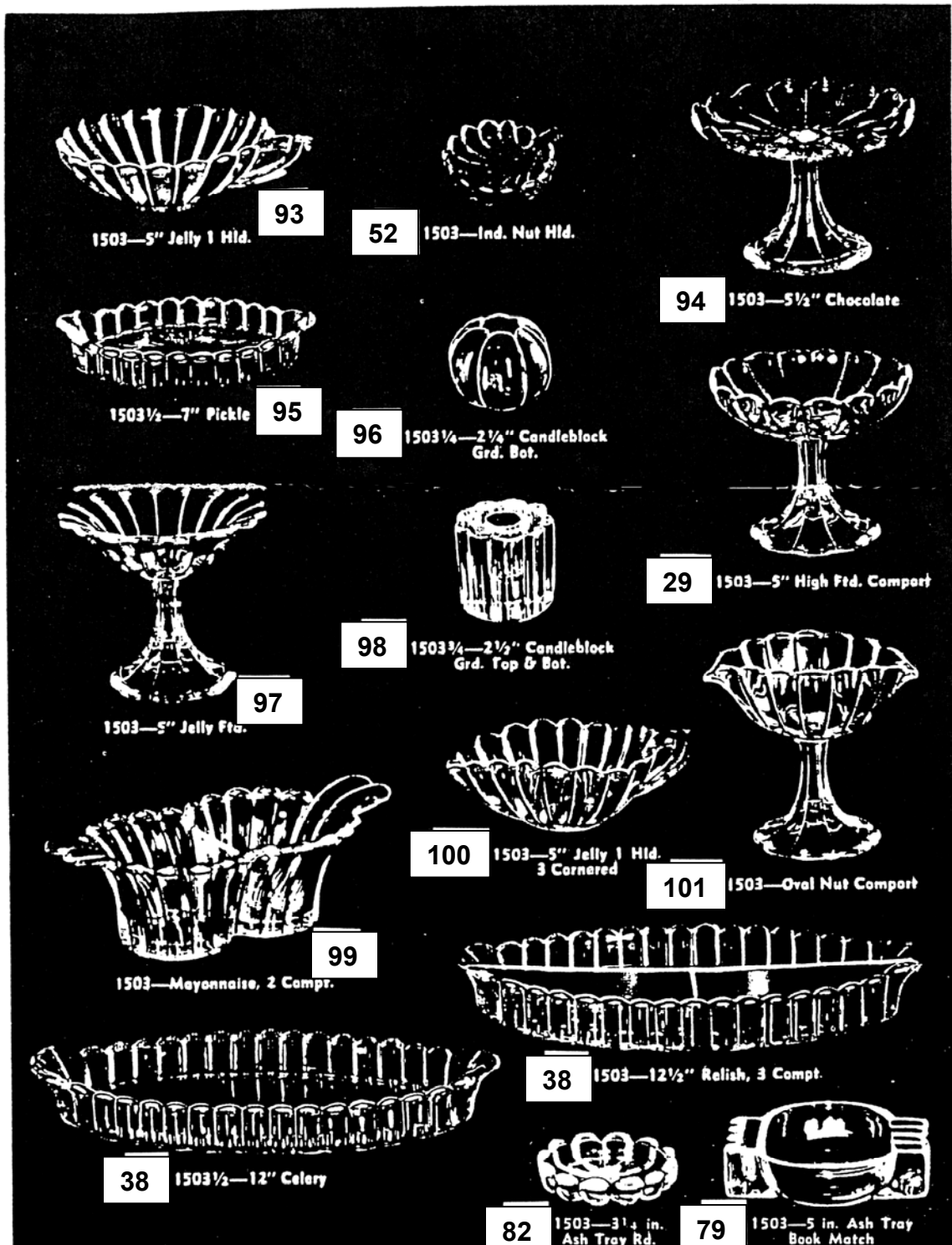


NEWARK, OHIO

Supplemental Pages from Catalog 212-17, ca 1938-39.
No. 1503 CRYSTOLITE PATTERN

H
A
N
D
M
A
D
E

G
L
A
S
S
W
A
R
E



A. H. HEISEY & CO.,



NEWARK, OHIO

No. 1503 CRYSTOLITE PATTERN

COPY OF AN ADDED PAGE IN CATALOG 212 - 1938 or 1939



46

1503—6" Shell Mayonnaise



47

1503—6" Shell Candy Box & Cover



44

1503—7" Shell Praline



124

1503—7" Shell Plate
also made
4", 10½" and 13"



125

1503—13" Shell Relish
5 Compt.



126

1503—11" Shell Comb. Salad
& Mayonnaise Bowl



127

1503—11" Shell Salad Bowl

A. H. HEISEY & CO.

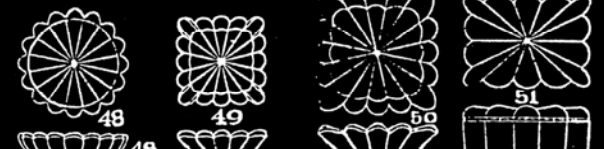
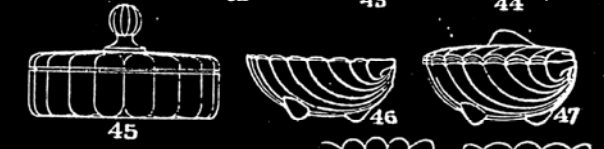
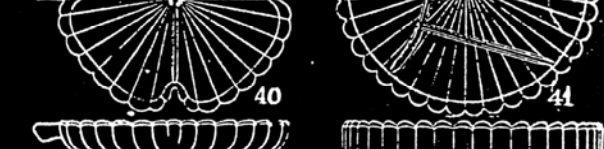
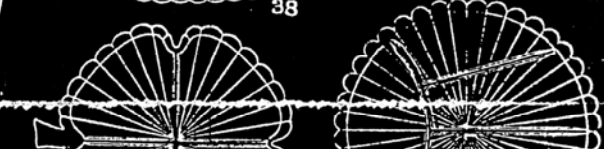
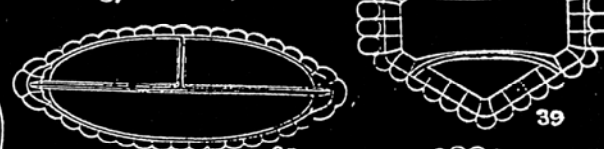
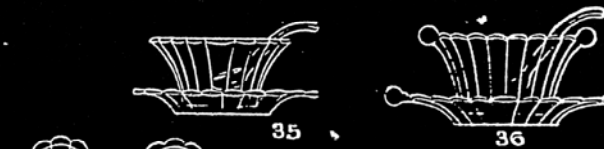
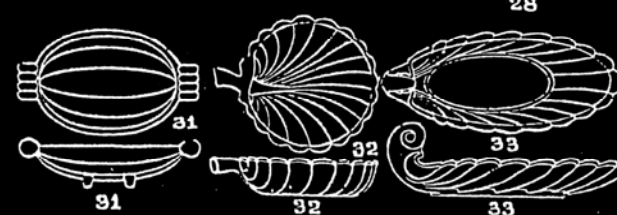
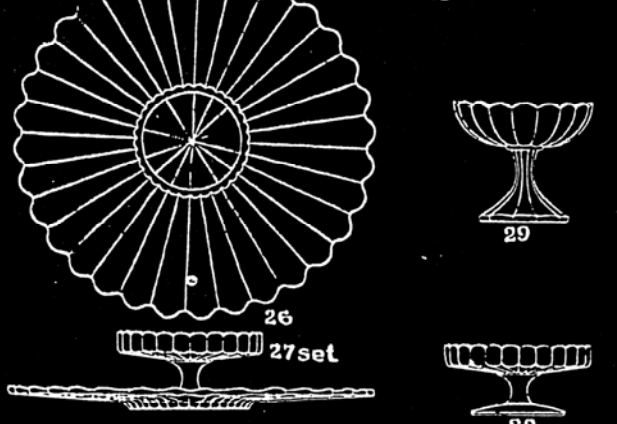
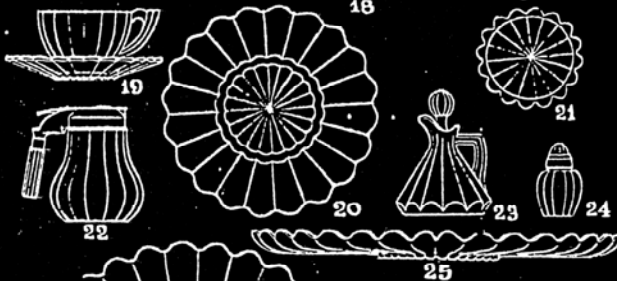


NEWARK, OHIO

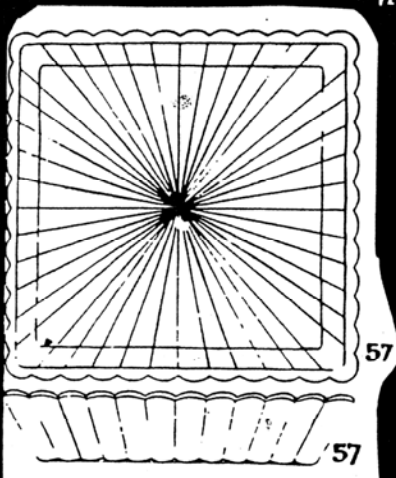
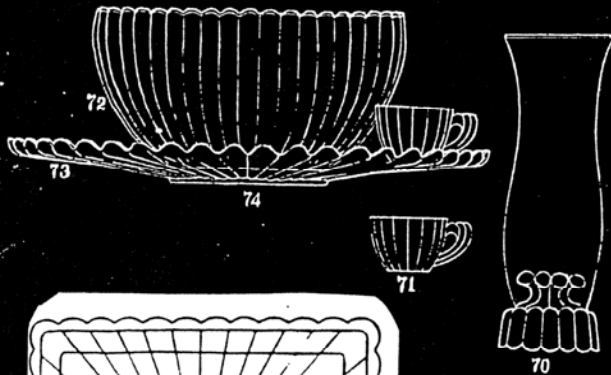
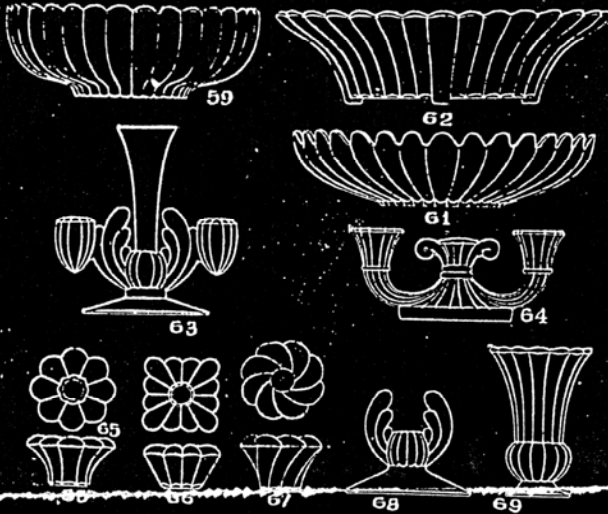
Crystolite

HAND-WROUGHT CRYSTAL

Crystolite



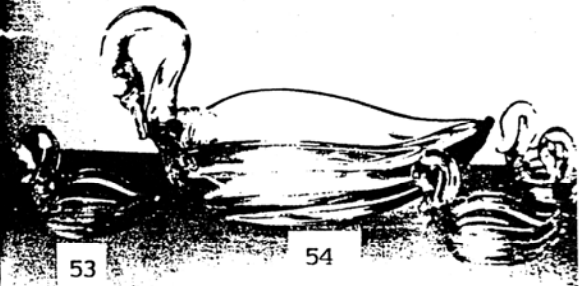
Crystolite



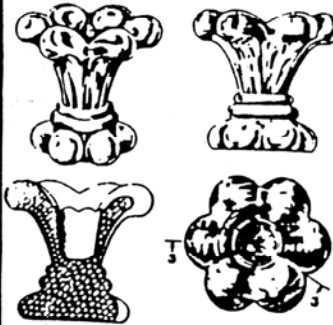
136



SWAN PITCHER
9 1/4" high



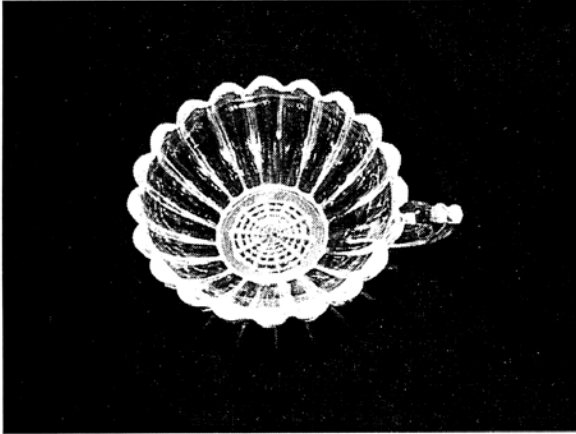
SWAN NUT SET
Large Swan — 7 1/2" long
Small Swan — 2 3/4" long



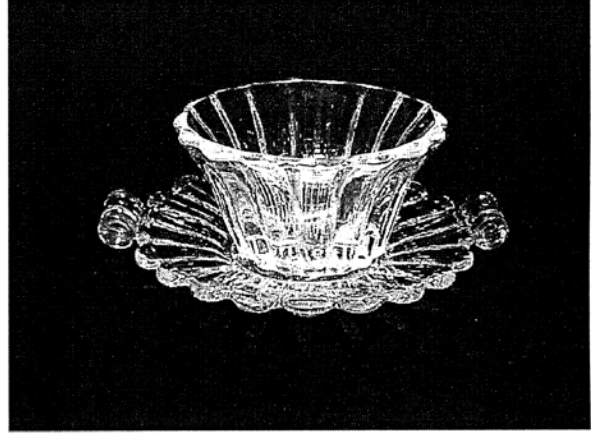
1566 - Banded Crystolite Candleblocks

- a. 1504 - Regency Candleblock
- b. 1504 - Regency Puff Box
- c. 1504 - Regency Cologne

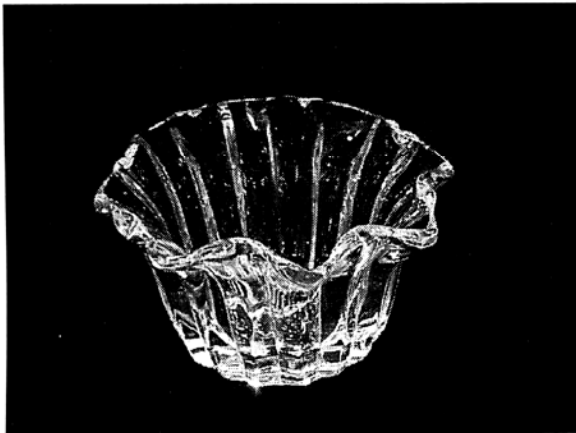
Bowls



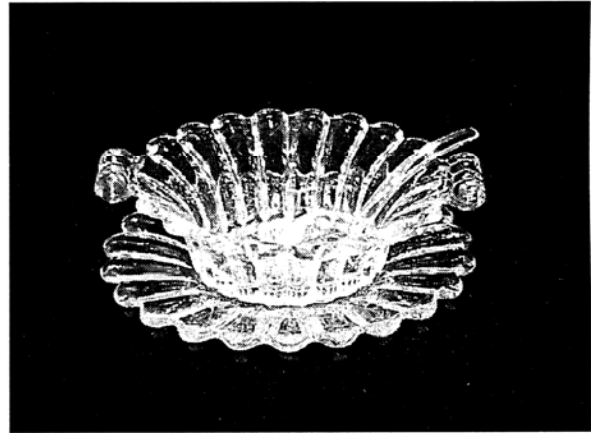
5-inch Jelly, 1 Handle, Web Bottom



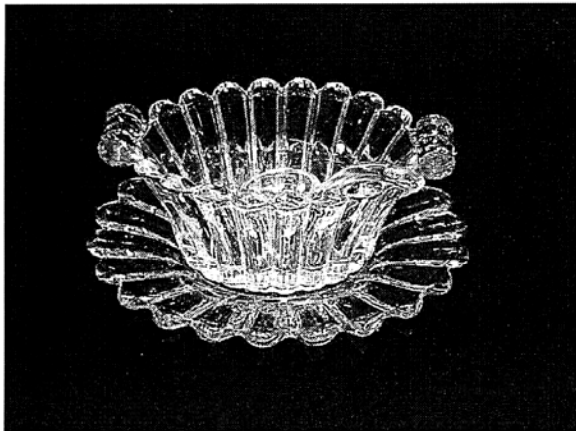
5-inch Flared 1000 Island Dressing & 7-inch Handled Plate



5-inch 1000 Island Dressing, Crimped



7-inch Oval Hollandaise Sauce, 8-inch Oval Plate & No. 7 Ladle

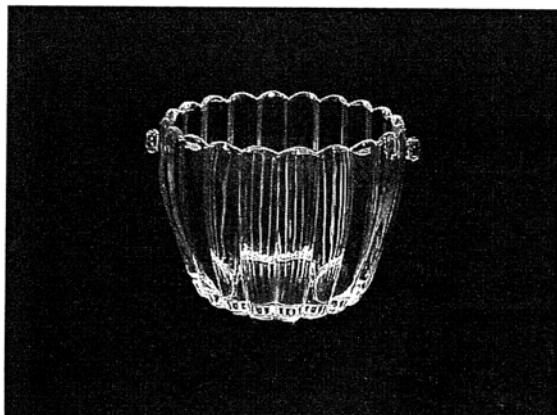


6-inch Oval Mayonnaise, 8-inch Oval Plate & No. 7 Ladle

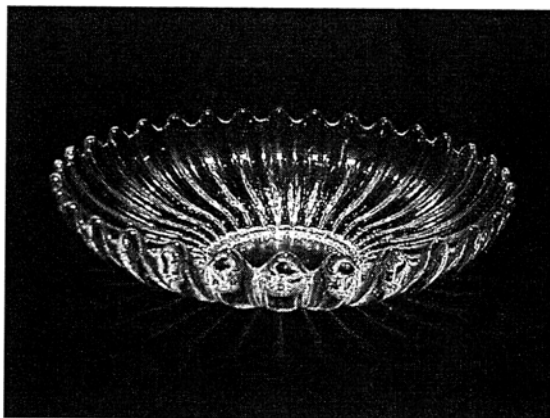


#4080 Finger, Wide Optic, Blown

Bowls



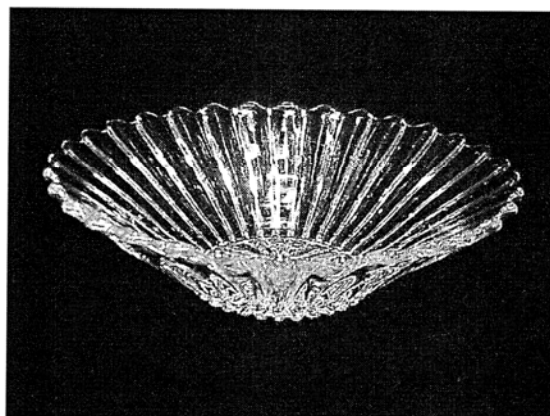
Ice Tub



12-inch Floral or Salad, Plain



12-inch Floral or Salad, Starburst



12-inch Fruit

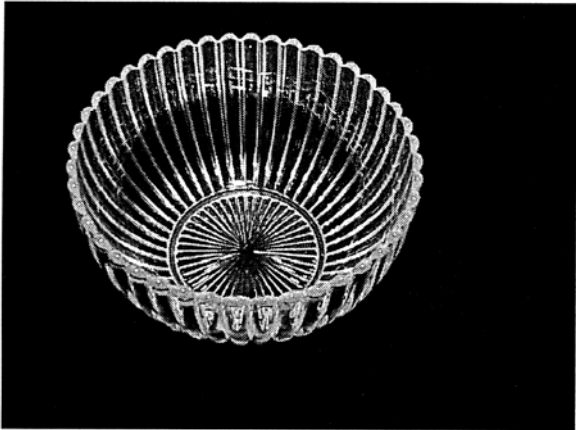


11-inch Shell Salad with Dressing Trough



11-inch Shell Salad

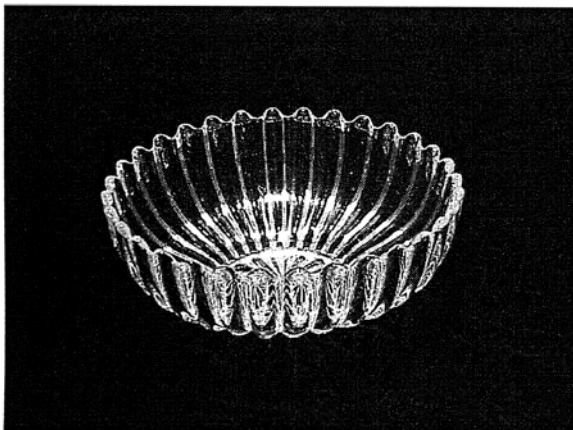
Bowls



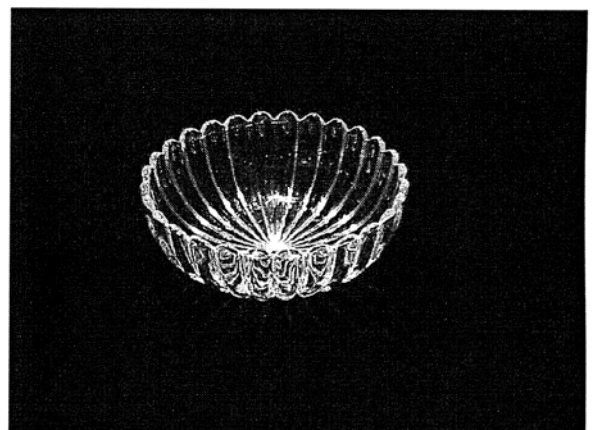
7.5-quart Punch



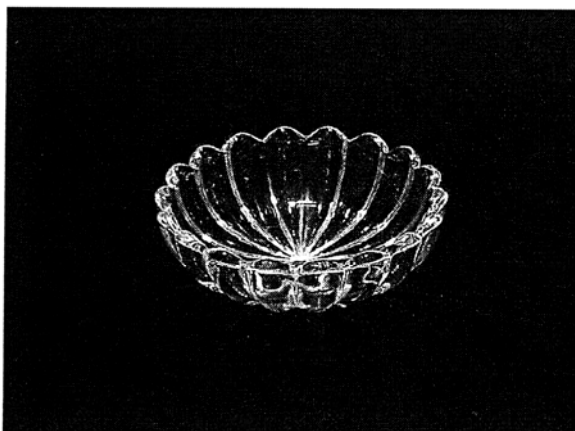
10-inch Spring Salad



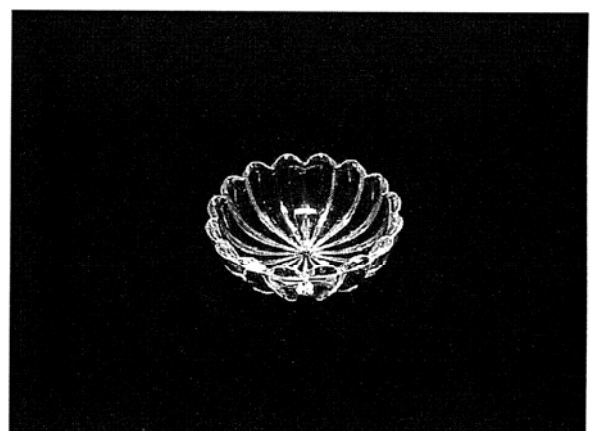
10-inch Deep Salad



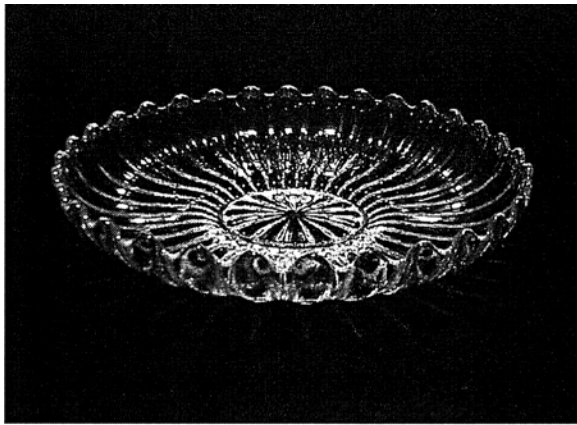
8-inch Dessert or Sauce



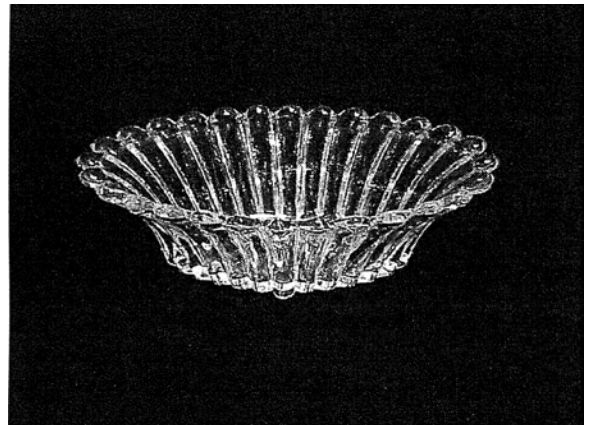
5.5-inch Dessert, Cereal or Nappy



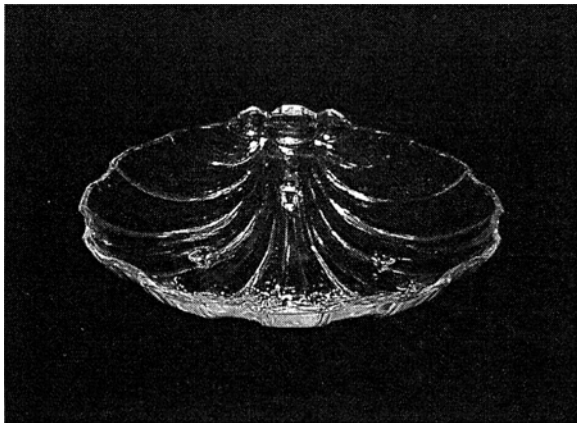
4.5-inch Dessert or Nappy



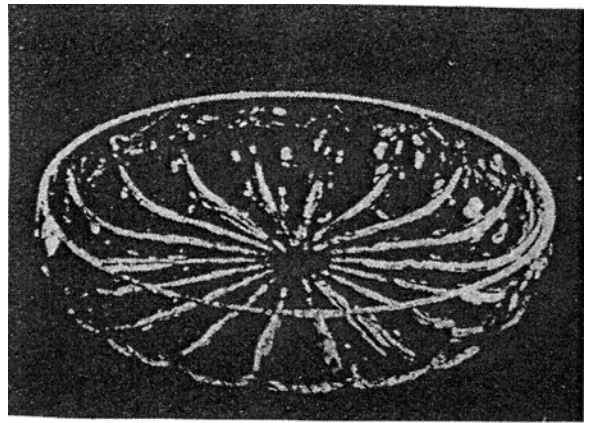
12-inch Shallow Floral or Gardenia



13-inch Oval Floral, Footed



12-inch Shell Floral, Footed



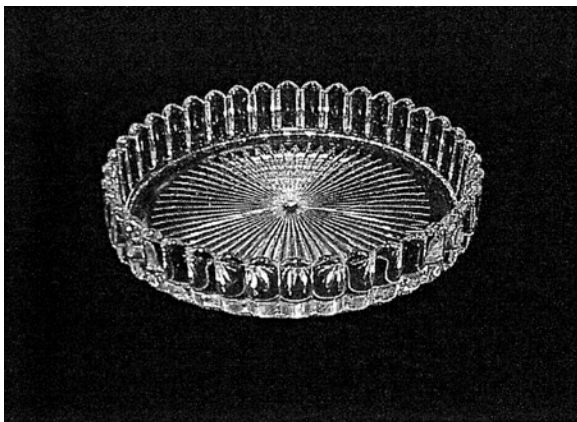
11-inch Salad, Blown



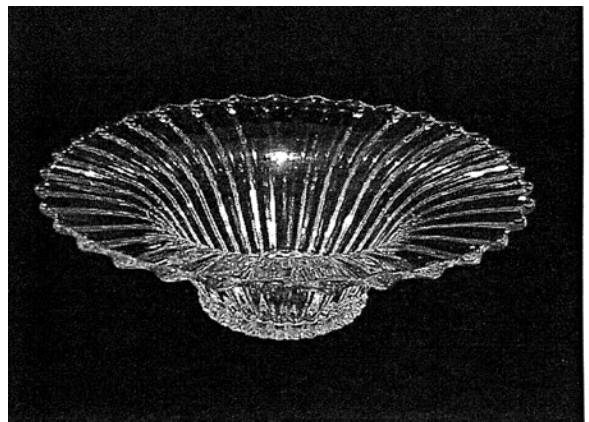
11-inch #1428 Warwick Cornucopia



12-inch Oval Shallow



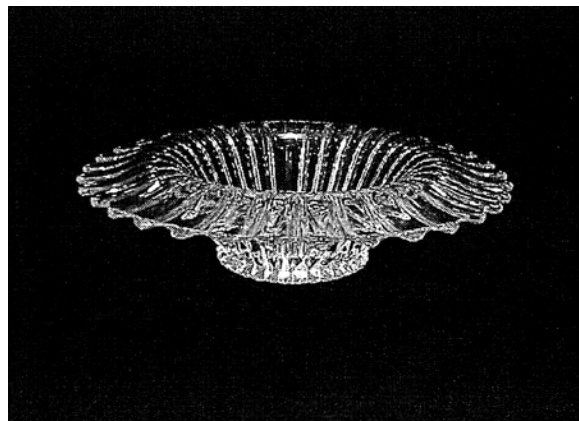
11-inch Center Piece



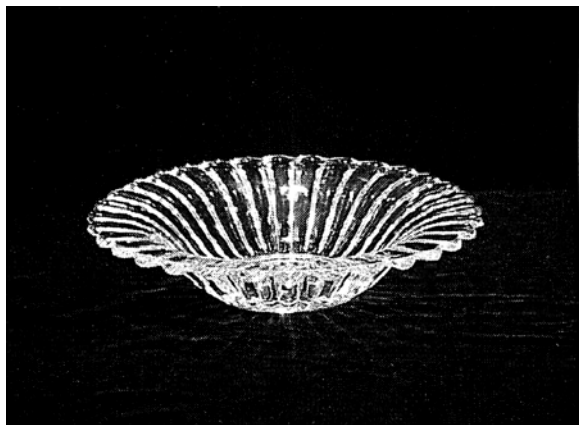
12.5-inch Round Floral



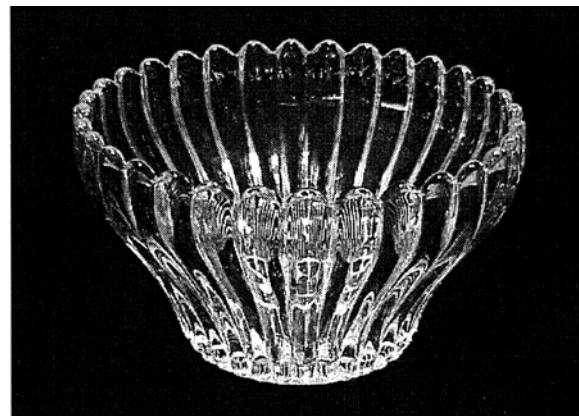
11.5-inch Round Floral



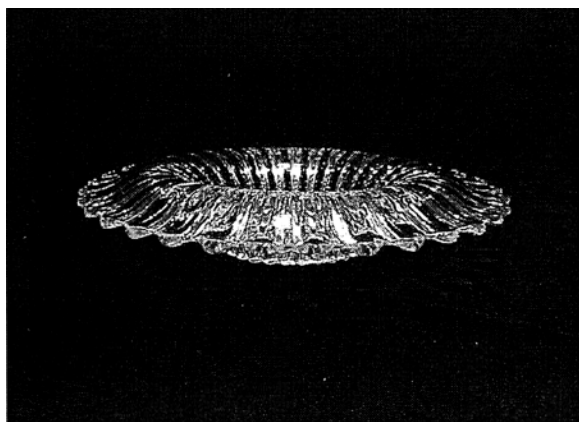
12-inch Gardenia, Half Roll



10-inch Round Floral



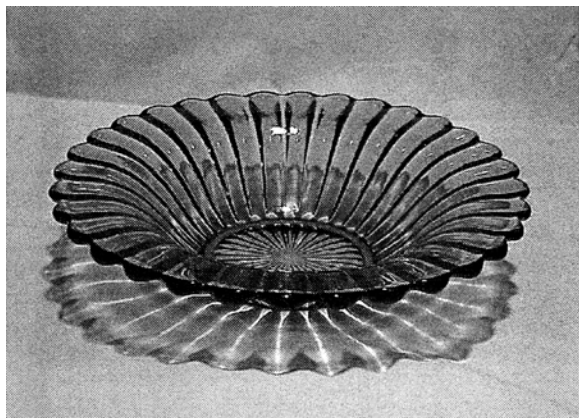
9-inch Floral Touraine



12-inch Gardenia, Full Roll

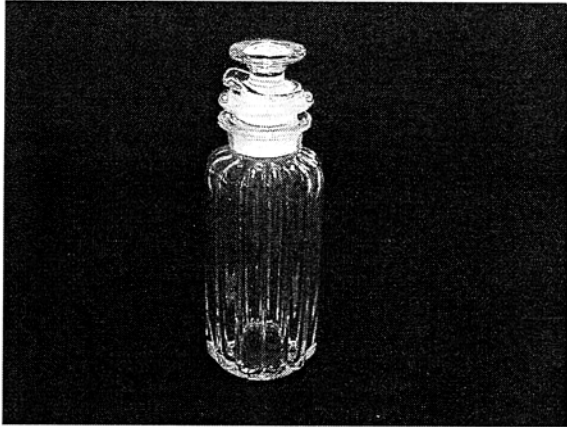


10-inch Square Shallow Floral



10-inch Floral, Dawn Color

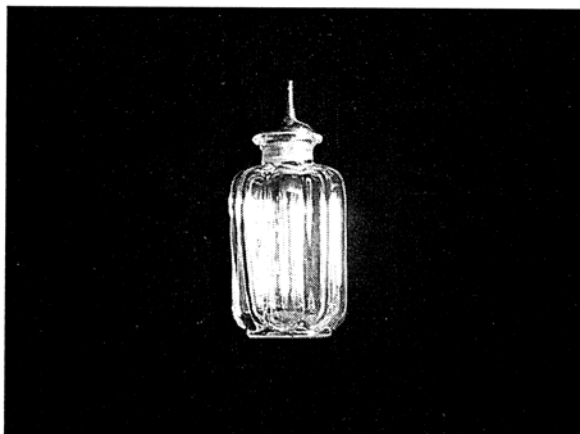
Bottles



1-quart Cocktail Shaker, No. 1 Strainer,
No. 86 Stopper



1-quart Rye, No. 107 Stopper

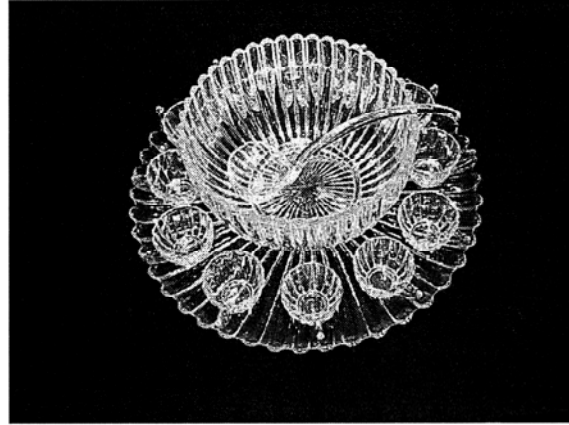


4-ounce Bitter, Short Tube

Sets



Lemonade



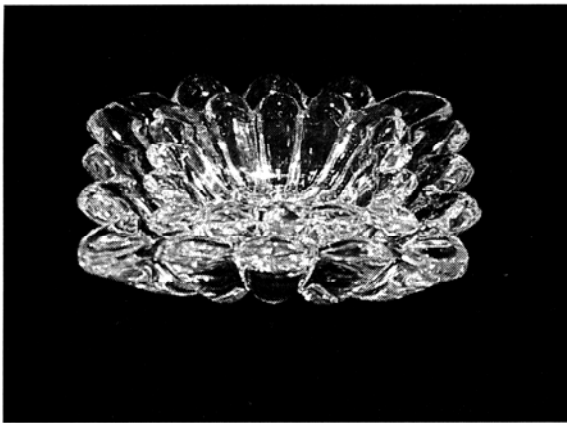
15-piece Punch



Dresser, #1503 Crystolite & #1504 Regency



Waffle



Ash Tray



The Eight Blown Footed Goblets

Bottles



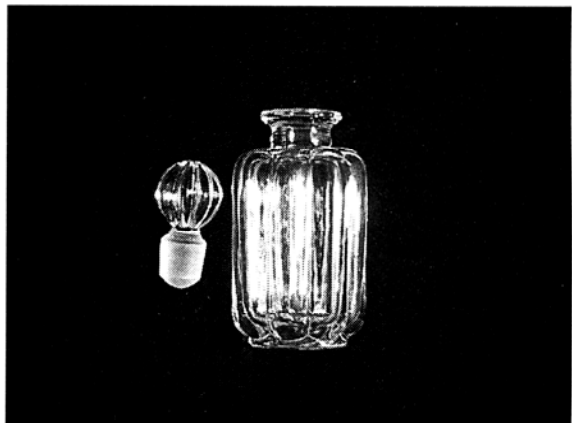
3-ounce Oil Cruet, No. 110 Stopper



#1504 Regency Perfume, Drip Cut Stopper

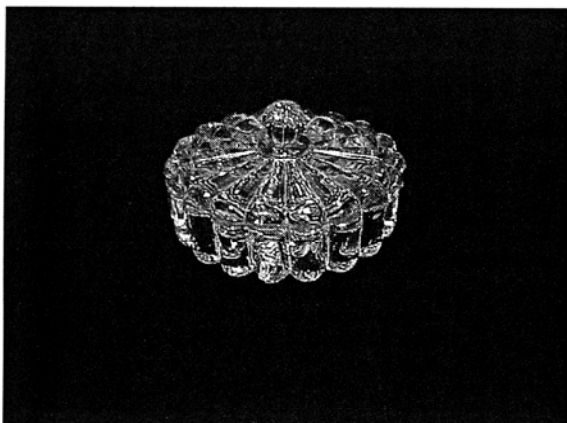


4-ounce Cologne, No. 108 Drip Cut Perfume Stopper

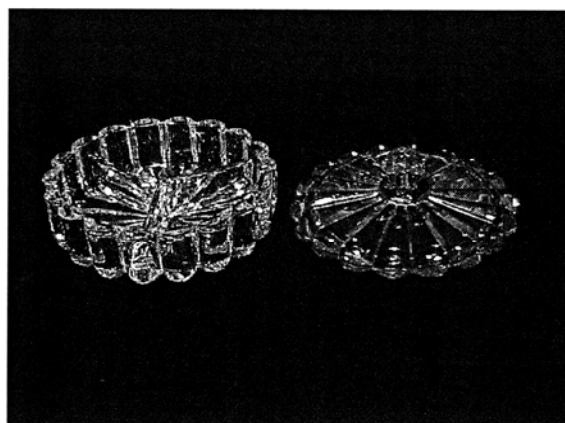


4-ounce Cologne, Rounded Cologne Stopper

Boxes



7-inch Candy & Cover



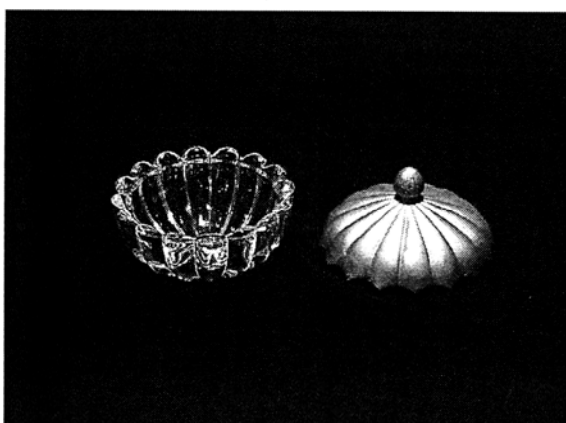
7-inch Candy, Divided & Cover



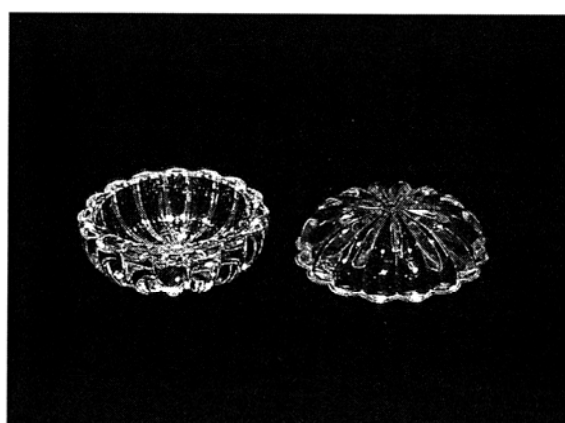
6-inch Shell Candy & Cover



6-inch Footed Candy & Cover

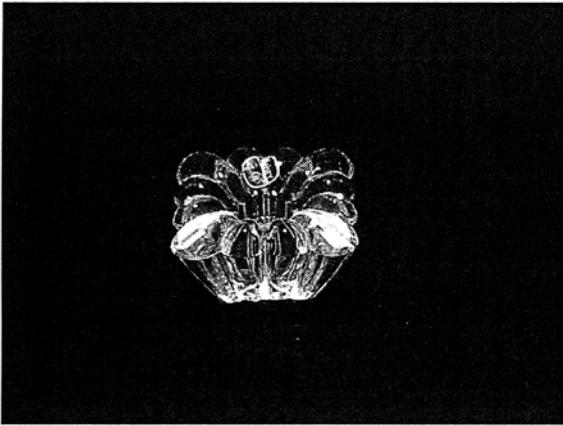


4-inch Powder Puff or Mint & Metal Cover

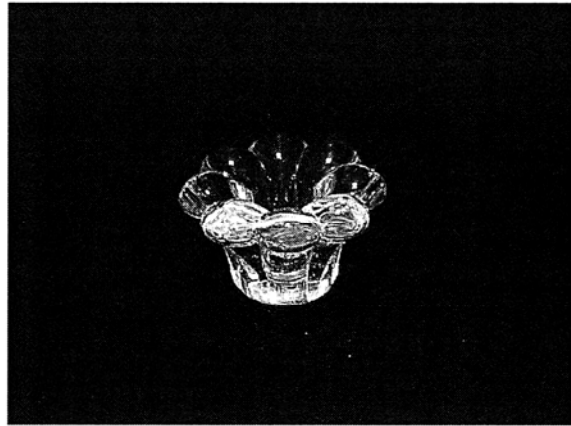


3.75-inch Powder Puff & Cover

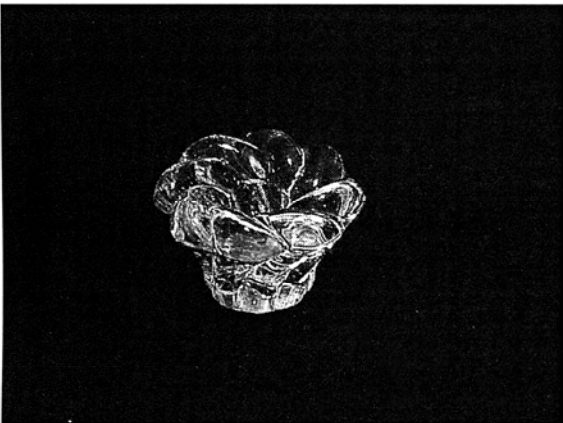
Candle Holders



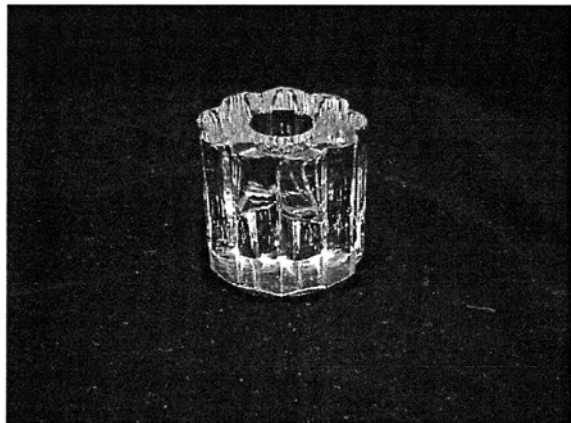
2-inch Square Block



2-inch Rosette Block



#1502 2-inch Swirl Block



#1503.75 2.5-inch Round Block



#1566 3-inch Banded Block



#1566 3-inch Banded Block, Amber Color

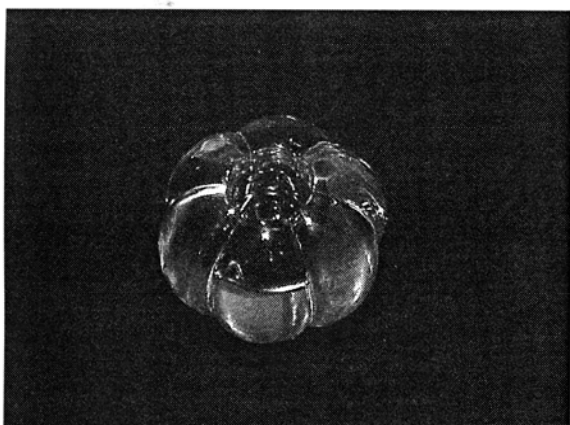
Candle Holders



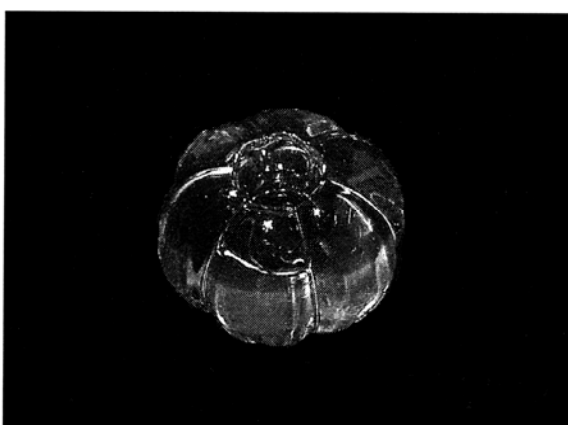
#1504 Regency 3-inch Banded Block



#1428 Warwick 2.5-inch Cornucopia



#1503.25 2.25-inch Melon Block



#1503.25 2.25-inch Melon Block, Amber Color

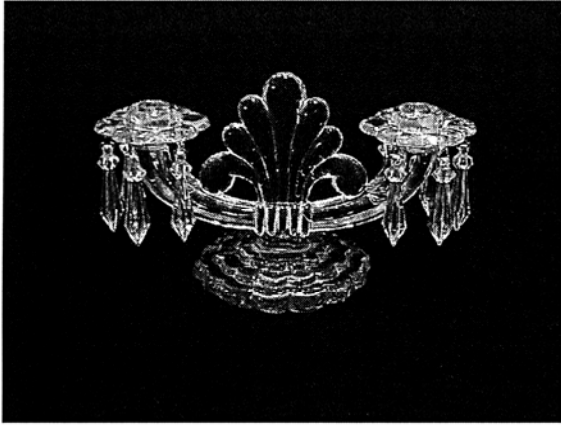


4-inch 1-light Footed Candlestick

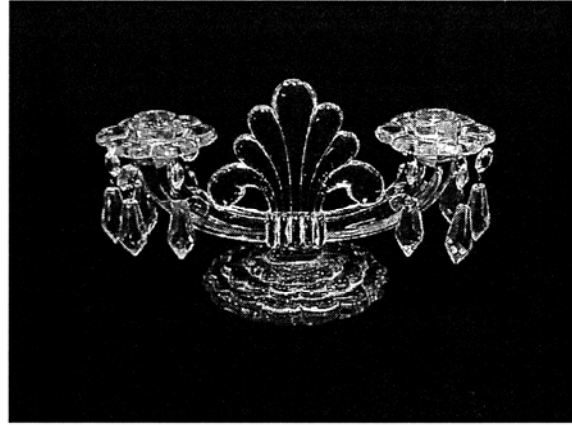


3-light Footed Candlestick, #4233 5-inch Vase

Candle Holders



2-light Candelabra, Bobeche & 10 "J" Prisms



2-light Candelabra, Bobeche & 10 "D" Prisms



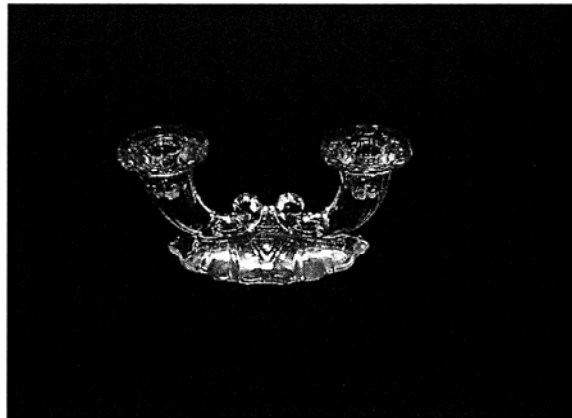
Round Hurricane Block, 9-inch Globe



Square Hurricane Block, 11-inch Globe



#1504 Regency, Two-light Candlestick

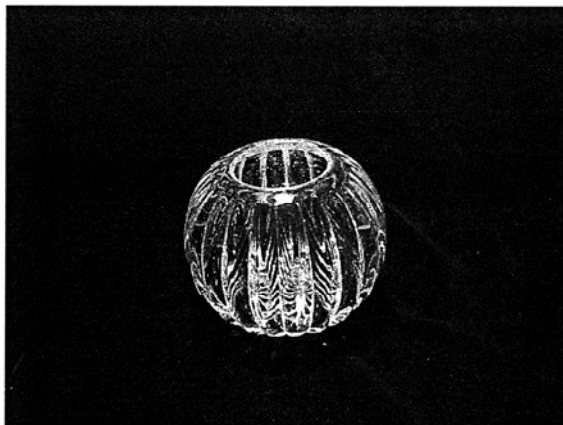


**#1428 Warwick, Two-light Cornucopia
Candlestick**

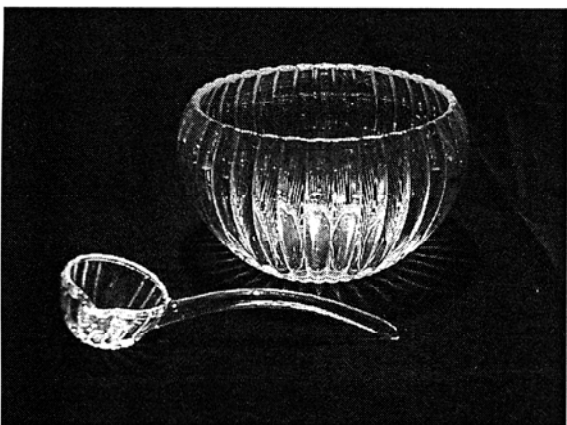
Some "Look Alikes" and What is Different



3-inch Handled Nappy. Not a Crystolite Shape.



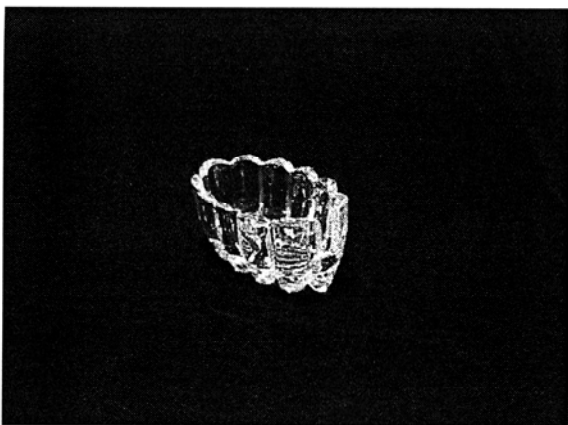
**6-inch Ball Vase. Not a Crystolite shape.
(Duncan & Miller "Radiance")**



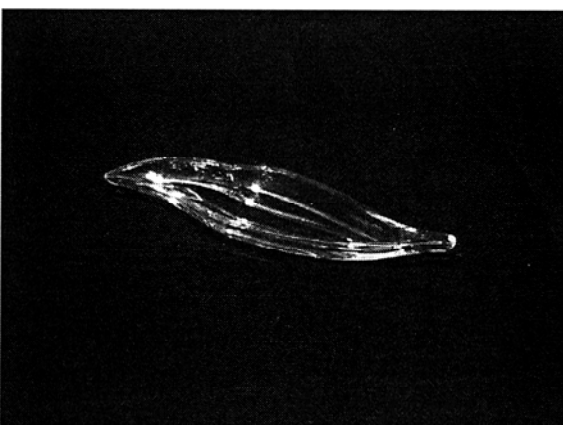
6.25-inch Punch Bowl. Barrel shape and blunted ribs. 11-inch Ladle. Ribs. (Duncan & Miller "Radiance")



5.5-inch Sweet Pea Vase. (Duncan & Miller "Radiance")



5.5-inch Mule Shoe Spooner (U.S. Glass)



11.5-inch Leaf Pickle. Not a Crystolite Shape